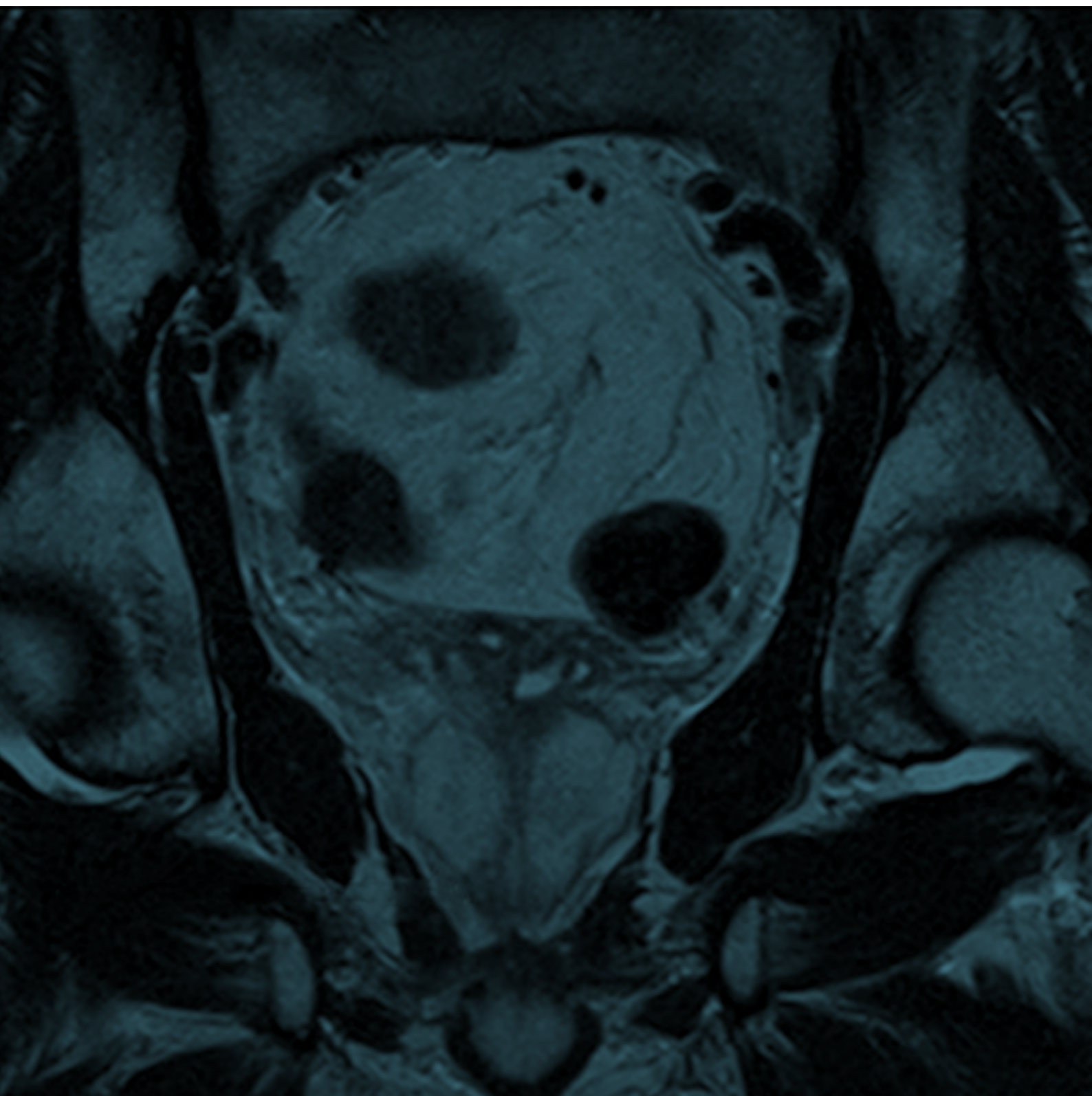


## Annual Report 2021

Provider level results



# National Prostate Cancer Audit

NPCA Annual Report 2021. Provider level results

London: The Royal College of Surgeons of England, 2022.



Royal College  
of Surgeons  
of England

Registered Charity No: 212808

The Royal College of Surgeons of England (RCS) is an independent professional body committed to enabling surgeons to achieve and maintain the highest standards of surgical practice and patient care. As part of this it supports Audit and the evaluation of clinical effectiveness for surgery.

The NPCA is based at the The Clinical Effectiveness Unit (CEU). The CEU is an academic collaboration between The Royal College of Surgeons of England and the London School of Hygiene and Tropical Medicine, and undertakes national clinical audits and research. Since its inception in 1998, the CEU has become a national centre of expertise in methods, organisation, and logistics of large-scale studies of the quality of surgical care. The CEU managed the publication of the NPCA Annual Report, 2020.

## In partnership with:



THE BRITISH ASSOCIATION  
OF UROLOGICAL SURGEONS

The British Association of Urological Surgeons (BAUS) was founded in 1945 and exists to promote the highest standards of practice in urology, for the benefit of patients, by fostering education, research and clinical excellence. BAUS is a registered charity and qualified medical practitioners practising in the field of urological surgery are eligible to apply for membership. It is intended that this website will be a resource for urologists, their patients, other members of the healthcare team and the wider public.



The British Uro-oncology Group (BUG) was formed in 2004 to meet the needs of clinical and medical oncologists specialising in the field of urology. As the only dedicated professional association for uro-oncologists, its overriding aim is to provide a networking and support forum for discussion and exchange of research and policy ideas.



NDRS  
NATIONAL DISEASE REGISTRATION SERVICE

National Cancer Registration and Analysis Service (NCRAS), Public Health England collects patient-level data from all NHS acute providers and from a range of national data feeds. Data sources are collated using a single data processing system ('Encore') and the management structure is delivered through eight regional offices across England.

The NCRAS is the data collection partner for the NPCA.

## Commissioned by:



HQIP

Healthcare Quality  
Improvement Partnership

The Healthcare Quality Improvement Partnership (HQIP) is led by a consortium of the Academy of Medical Royal Colleges, the Royal College of Nursing, and National Voices. Its aim is to promote quality improvement in patient outcomes, and in particular, to increase the impact that clinical audit, outcome review programmes and registries have on healthcare quality in England and Wales. HQIP holds the contract to commission, manage, and develop the National Clinical Audit and Patient Outcomes Programme (NCAPOP), comprising around 40 projects covering care provided to people with a wide range of medical, surgical and mental health conditions. The programme is funded by NHS England, the Welsh Government and, with some individual projects, other devolved administrations and crown dependencies [www.hqip.org.uk/national-programmes](http://www.hqip.org.uk/national-programmes)

All rights reserved. Applications for the copyright owner's written permission to reproduce significant parts of this publication (including photocopying or storing it in any medium by electronic means and whether or not transiently or incidentally to some other use of this publication) should be addressed to the publisher. Brief extracts from this publication may be reproduced without the written permission of the copyright owner, provided that the source is fully acknowledged.

Copyright © 2022 Healthcare Quality Improvement Partnership (HQIP)

Published January 2022 by the National Prostate Cancer Audit

The Royal College of Surgeons of England  
35-43 Lincoln's Inn Fields  
London  
WC2A 3PE

T 020 7869 6601  
E [n pca@rcseng.ac.uk](mailto:n pca@rcseng.ac.uk)  
[www.n pca.org.uk](http://www.n pca.org.uk)

Designed @ [www.superbirdcreative.co.uk](http://www.superbirdcreative.co.uk)

---

# Contents

---

<b>Appendix 1: Provider level (specialist MDT) data for the performance indicator 1.</b>	<b>4</b>
<u>Performance indicator 1</u> : Proportion of men diagnosed with metastatic disease at first presentation.	
<b>Appendix 2: Provider level (surgical centre) data for the performance indicator 2</b>	<b>6</b>
<u>Performance indicator 2</u> : Proportion of patients who had an emergency readmission within 90 days of radical prostate cancer surgery.	
<b>Appendix 3: Provider level (surgical centre) data for the performance indicator 3</b>	<b>8</b>
<u>Performance indicator 3</u> : Proportion of patients experiencing at least one genitourinary (GU) complication requiring a procedural/surgical intervention within 2 years of radical prostatectomy (presented at the level of the surgical centre).	
<b>Appendix 4: Provider level (radiotherapy centre) data for the performance indicator 4</b>	<b>10</b>
<u>Performance indicator 4</u> : Proportion of patients receiving a procedure of the large bowel and a diagnosis indicating radiation toxicity (gastrointestinal (GI) complication) up to 2 years following radical prostate radiotherapy (presented at the level of the radiotherapy centre).	
<b>Appendix 5: Provider level (specialist MDT) data for the performance indicators 5 and 6 (Wales only)</b>	<b>12</b>
<u>Performance indicator 5</u> : Proportion of men with low-risk localised prostate cancer undergoing radical prostate cancer therapy.	
<u>Performance indicator 6</u> : Proportion of men with locally advanced disease receiving radical prostate cancer therapy.	

## Appendix 1: Provider level (specialist MDT) data for the performance indicator 1.

Performance indicator 1: Proportion of men diagnosed with metastatic disease at first presentation.

Specialist MDT	No. of men with disease status determined	No. men diagnosed with metastatic disease	
		N	%
<b>Overall</b>	<b>34801</b>	<b>4528</b>	<b>13.0</b>
Aneurin Bevan UHB	355	69	19.4
Barking, Havering and Redbridge University Hospitals NHS Trust	317	21	6.6
Barts Health NHS Trust	384	57	14.8
Betsi Cadwaladr UHB	526	69	13.1
Bradford Teaching Hospitals NHS Foundation Trust	708	69	9.7
Brighton and Sussex University Hospitals NHS Trust	517	63	12.2
Cambridge University Hospitals NHS Foundation Trust	1163	127	10.9
Cardiff and Vale UHB	660	80	12.1
East and North Hertfordshire NHS Trust	585	78	13.3
East Kent Hospitals University NHS Foundation Trust	497	67	13.5
Gloucestershire Hospitals NHS Foundation Trust	291	42	14.4
Guy's and St Thomas' NHS Foundation Trust	981	94	9.6
Hull University Teaching Hospitals NHS Trust	923	154	16.7
Imperial College Healthcare NHS Trust	776	86	11.1
Lancashire Teaching Hospitals NHS Foundation Trust	1061	176	16.6
Leeds Teaching Hospitals NHS Trust	659	103	15.6
Liverpool University Hospitals NHS Foundation Trust	512	59	11.5
Manchester University NHS Foundation Trust	841	117	13.9
Medway NHS Foundation Trust	496	48	9.7
Mid Yorkshire Hospitals NHS Trust	382	67	17.5
Norfolk and Norwich University Hospitals NHS Foundation Trust	562	62	11.0
North Bristol NHS Trust	998	115	11.5
Northampton General Hospital NHS Trust	390	31	7.9
Nottingham University Hospitals NHS Trust	393	67	17.0
Oxford University Hospitals NHS Foundation Trust	563	70	12.4
Plymouth Hospitals NHS Trust	817	177	21.7
Portsmouth Hospitals NHS Trust	541	74	13.7
Royal Berkshire NHS Foundation Trust	330	12	3.6

Specialist MDT	No. of men with disease status determined	No. men diagnosed with metastatic disease	
		N	%
Royal Devon and Exeter NHS Foundation Trust	1269	151	11.9
Royal Surrey County Hospital NHS Foundation Trust	1688	223	13.2
Salford Royal NHS Foundation Trust	507	83	16.4
Sheffield Teaching Hospitals NHS Foundation Trust	1158	159	13.7
South Tees Hospitals NHS Foundation Trust	466	107	23.0
South Tyneside and Sunderland NHS Foundation Trust	312	47	15.1
Southend University Hospital NHS Foundation Trust	774	86	11.1
Stockport NHS Foundation Trust	710	116	16.3
Swansea Bay UHB	924	110	11.9
The Newcastle upon Tyne Hospitals NHS Foundation Trust	761	127	16.7
The Princess Alexandra Hospital NHS Trust	290	33	11.4
The Royal Bournemouth and Christchurch Hospitals NHS Foundation Trust	839	107	12.8
The Royal Marsden NHS Foundation Trust	1172	122	10.4
University College London Hospitals NHS Foundation Trust	569	27	4.7
University Hospital Southampton NHS Foundation Trust	656	75	11.4
University Hospitals Birmingham NHS Foundation Trust	501	47	9.4
University Hospitals Coventry and Warwickshire NHS Trust	1233	168	13.6
University Hospitals of Derby and Burton NHS Foundation Trust	539	83	15.4
University Hospitals of Leicester NHS Trust	1065	152	14.3
University Hospitals of North Midlands NHS Trust	1239	110	8.9
Wirral University Teaching Hospital NHS Foundation Trust	901	141	15.6

## Appendix 2: Provider level (surgical centre) data for the performance indicator 2

Performance indicator 2: Proportion of patients who had an emergency readmission within 90 days of radical prostate cancer surgery.

RP Trust	No. men who received RP	No. men who had an emergency readmission within 90 days of RP	Adjusted rate (%)
<b>Overall</b>	<b>7244</b>	<b>968</b>	<b>13.4</b>
Aneurin Bevan ULHB	60	8	13.3
Betsi Cadwaladr ULHB	34	5	14.5
Bradford Teaching Hospitals NHS Foundation Trust	154	35	22.3
Buckinghamshire Healthcare NHS Trust	56	7	12.6
Cambridge University Hospitals NHS Foundation Trust	174	19	11.0
Cardiff and Vale ULHB	150	18	11.9
East and North Hertfordshire NHS Trust	180	23	12.8
East Kent Hospitals University NHS Foundation Trust	137	40	28.2
East Lancashire Hospitals NHS Trust	90	20	21.5
East Sussex Healthcare NHS Trust	109	21	19.8
Gloucestershire Hospitals NHS Foundation Trust	159	14	8.6
Guy's and St Thomas' NHS Foundation Trust	258	12	4.9
Hull University Teaching Hospitals NHS Trust	223	26	11.5
Imperial College Healthcare NHS Trust	136	16	11.9
Lancashire Teaching Hospitals NHS Foundation Trust	116	12	10.6
Leeds Teaching Hospitals NHS Trust	123	8	6.4
Liverpool University Hospitals NHS Foundation Trust	141	16	11.4
Medway NHS Foundation Trust	138	25	17.8
Mid Yorkshire Hospitals NHS Trust	84	19	24.2
Norfolk and Norwich University Hospitals NHS Foundation Trust	133	29	21.3
North Bristol NHS Trust	337	42	11.9
Nottingham University Hospitals NHS Trust	128	20	15.8
Oxford University Hospitals NHS Foundation Trust	165	31	19.1
Plymouth Hospitals NHS Trust	102	7	6.5
Portsmouth Hospitals NHS Trust	112	13	11.0
Royal Berkshire NHS Foundation Trust	178	42	24.1
Royal Devon and Exeter NHS Foundation Trust	172	16	9.1
Royal Surrey County Hospital NHS Foundation Trust	292	26	9.0

/Appendix 2 continued

RP Trust	No. men who received RP	No. men who had an emergency readmission within 90 days of RP	Adjusted rate (%)
Royal United Hospital Bath NHS Foundation Trust	56	7	13.1
Sheffield Teaching Hospitals NHS Foundation Trust	248	32	13.3
Shrewsbury and Telford Hospital NHS Trust	52	9	17.1
South Tees Hospitals NHS Foundation Trust	80	13	16.4
South Tyneside and Sunderland NHS Foundation Trust	120	22	17.5
Southend University Hospital NHS Foundation Trust	113	13	11.4
St George's University Hospitals NHS Foundation Trust	136	10	7.4
Stockport NHS Foundation Trust	160	5	3.3
Swansea Bay ULHB	11	1	9.2
The Christie NHS Foundation Trust	153	19	13.1
The Newcastle upon Tyne Hospitals NHS Foundation Trust	152	22	15.0
The Royal Bournemouth and Christchurch Hospitals NHS Foundation Trust	107	21	19.9
The Royal Marsden NHS Foundation Trust	164	13	8.2
The Royal Wolverhampton NHS Trust	161	12	7.3
University College London Hospitals NHS Foundation Trust	491	39	8.0
University Hospital Southampton NHS Foundation Trust	216	23	10.6
University Hospitals Birmingham NHS Foundation Trust	119	23	18.9
University Hospitals Coventry and Warwickshire NHS Trust	144	18	12.4
University Hospitals of Leicester NHS Trust	181	35	18.8
University Hospitals of North Midlands NHS Trust	79	23	27.6
Wirral University Teaching Hospital NHS Foundation Trust	81	13	15.4
Worcestershire Acute Hospitals NHS Trust	79	25	30.4

### Appendix 3: Provider level (surgical centre) data for the performance indicator 3

Performance indicator 3: Proportion of patients experiencing at least one genitourinary (GU) complication requiring a procedural/surgical intervention within 2 years of radical prostatectomy (presented at the level of the surgical centre).

RP Trust	No. men who received RP	No. men who experienced at least one GU complication	Adjusted rate (%)
<b>Overall</b>	<b>5188</b>	<b>372</b>	<b>7.2</b>
Aneurin Bevan ULHB	35	5	11.2
Betsi Cadwaladr ULHB	37	1	2.1
Bradford Teaching Hospitals NHS Foundation Trust	110	17	15.7
Buckinghamshire Healthcare NHS Trust	50	5	8.9
Cambridge University Hospitals NHS Foundation Trust	140	7	5.1
Cardiff and Vale ULHB	110	10	7.4
East and North Hertfordshire NHS Trust	123	11	9.1
East Kent Hospitals University NHS Foundation Trust	147	20	13.2
East Lancashire Hospitals NHS Trust	72	14	20.3
East Sussex Healthcare NHS Trust	22	1	4.9
Gloucestershire Hospitals NHS Foundation Trust	75	6	7.7
Guy's and St Thomas' NHS Foundation Trust	162	4	3.0
Hull University Teaching Hospitals NHS Trust	127	8	6.2
Imperial College Healthcare NHS Trust	79	6	8.9
Lancashire Teaching Hospitals NHS Foundation Trust	61	2	3.3
Leeds Teaching Hospitals NHS Trust	92	3	3.1
Liverpool University Hospitals NHS Foundation Trust	110	2	1.9
Manchester University NHS Foundation Trust	19	2	10.0
Medway NHS Foundation Trust	104	12	12.5
Mid Essex Hospital Services NHS Trust	29	2	6.2
Mid Yorkshire Hospitals NHS Trust	56	3	5.6
Norfolk and Norwich University Hospitals NHS Foundation Trust	116	3	2.5
North Bristol NHS Trust	194	20	9.9
Nottingham University Hospitals NHS Trust	83	1	1.2
Oxford University Hospitals NHS Foundation Trust	122	10	6.8
Plymouth Hospitals NHS Trust	77	3	3.7
Portsmouth Hospitals NHS Trust	49	3	6.4
Royal Berkshire NHS Foundation Trust	123	9	8.0



/Appendix 3 continued

RP Trust	No. men who received RP	No. men who experienced at least one GU complication	Adjusted rate (%)
Royal Devon and Exeter NHS Foundation Trust	137	4	3.1
Royal Surrey County Hospital NHS Foundation Trust	209	18	8.5
Royal United Hospital Bath NHS Foundation Trust	29	5	19.3
Sheffield Teaching Hospitals NHS Foundation Trust	194	13	6.5
Shrewsbury and Telford Hospital NHS Trust	45	8	17.2
South Tees Hospitals NHS Foundation Trust	82	7	7.2
South Tyneside and Sunderland NHS Foundation Trust	71	2	2.7
Southend University Hospital NHS Foundation Trust	69	9	13.3
St George's University Hospitals NHS Foundation Trust	100	3	3.2
Stockport NHS Foundation Trust	85	1	1.1
Swansea Bay ULHB	42	9	16.3
The Christie NHS Foundation Trust	93	10	12.4
The Newcastle upon Tyne Hospitals NHS Foundation Trust	120	6	5.3
The Royal Bournemouth and Christchurch Hospitals NHS Foundation Trust	96	7	7.0
The Royal Marsden NHS Foundation Trust	106	6	6.2
The Royal Wolverhampton NHS Trust	97	2	2.3
University College London Hospitals NHS Foundation Trust	392	16	4.4
University Hospital Southampton NHS Foundation Trust	122	8	6.3
University Hospitals Birmingham NHS Foundation Trust	130	3	2.3
University Hospitals Coventry and Warwickshire NHS Trust	110	11	10.3
University Hospitals of Derby and Burton NHS Foundation Trust	85	13	15.5
University Hospitals of Leicester NHS Trust	100	6	6.2
University Hospitals of North Midlands NHS Trust	40	4	7.9
Wirral University Teaching Hospital NHS Foundation Trust	56	5	9.6
Worcestershire Acute Hospitals NHS Trust	54	6	10.8

#### Appendix 4: Provider level (radiotherapy centre) data for the performance indicator 4

Performance indicator 4: Proportion of patients receiving a procedure of the large bowel and a diagnosis indicating radiation toxicity (gastrointestinal (GI) complication) up to 2 years following radical prostate radiotherapy (presented at the level of the radiotherapy centre).

RT Trust	No. men who received RT	No. men who experienced at least one GI complication	Adjusted rate (%)
<b>Overall</b>	<b>6806</b>	<b>741</b>	<b>10.9</b>
Barking, Havering and Redbridge University Hospitals NHS Trust	93	18	18.9
Barts Health NHS Trust	46	4	8.8
Betsi Cadwaladr ULHB	195	25	12.9
Brighton and Sussex University Hospitals NHS Trust	133	12	9.3
Cambridge University Hospitals NHS Foundation Trust	169	23	13.4
East and North Hertfordshire NHS Trust	221	26	11.7
East Suffolk and North Essex NHS Foundation Trust	196	17	8.5
Gloucestershire Hospitals NHS Foundation Trust	99	10	10.0
Guy's and St Thomas' NHS Foundation Trust	97	14	14.5
Hampshire Hospitals NHS Foundation Trust	45	8	17.2
Hull University Teaching Hospitals NHS Trust	142	16	11.4
Imperial College Healthcare NHS Trust	85	8	9.4
Lancashire Teaching Hospitals NHS Foundation Trust	185	21	11.1
Leeds Teaching Hospitals NHS Trust	328	23	7.1
Maidstone and Tunbridge Wells NHS Trust	173	26	15.0
Norfolk and Norwich University Hospitals NHS Foundation Trust	146	33	22.7
North Cumbria Integrated Care NHS Foundation Trust	45	5	11.4
North Middlesex University Hospital NHS Trust	56	4	7.2
North West Anglia NHS Foundation Trust	135	10	7.5
Northampton General Hospital NHS Trust	64	11	17.3
Nottingham University Hospitals NHS Trust	153	23	14.8
Oxford University Hospitals NHS Foundation Trust	163	10	6.2
Plymouth Hospitals NHS Trust	20	0	0.0
Poole Hospital NHS Foundation Trust	121	11	9.4
Portsmouth Hospitals NHS Trust	147	23	15.9
Royal Berkshire NHS Foundation Trust	147	4	2.7
Royal Cornwall Hospitals NHS Trust	46	7	15.4
Royal Devon and Exeter NHS Foundation Trust	127	15	11.6

/Appendix 4 continued

RT Trust	No. men who received RT	No. men who experienced at least one GI complication	Adjusted rate (%)
Royal Free London NHS Foundation Trust	28	6	21.9
Royal Surrey County Hospital NHS Foundation Trust	164	16	9.5
Royal United Hospital Bath NHS Foundation Trust	66	11	16.9
Sheffield Teaching Hospitals NHS Foundation Trust	216	34	16.2
Shrewsbury and Telford Hospital NHS Trust	77	16	20.8
South Tees Hospitals NHS Foundation Trust	176	10	5.7
Southend University Hospital NHS Foundation Trust	46	5	10.7
Swansea Bay ULHB	125	17	13.5
Taunton and Somerset NHS Foundation Trust	64	4	6.1
The Christie NHS Foundation Trust	324	43	13.1
The Clatterbridge Cancer Centre NHS Foundation Trust	280	14	5.0
The Newcastle upon Tyne Hospitals NHS Foundation Trust	151	12	8.1
The Royal Marsden NHS Foundation Trust	138	17	11.8
The Royal Wolverhampton NHS Trust	118	14	12.0
Torbay and South Devon NHS Foundation Trust	50	7	14.2
United Lincolnshire Hospitals NHS Trust	92	10	11.0
University Hospital Southampton NHS Foundation Trust	80	8	10.1
University Hospitals Birmingham NHS Foundation Trust	143	9	6.3
University Hospitals Bristol NHS Foundation Trust	77	6	7.8
University Hospitals Coventry and Warwickshire NHS Trust	73	6	8.3
University Hospitals of Derby and Burton NHS Foundation Trust	116	20	17.5
University Hospitals of Leicester NHS Trust	93	5	5.6
University Hospitals of North Midlands NHS Trust	77	15	19.5
Velindre NHS Trust	391	27	6.7
Worcestershire Acute Hospitals NHS Trust	64	2	3.1

## Appendix 5: Provider level (specialist MDT) data for the performance indicators 5 and 6 (Wales only)

Performance indicator 5: Proportion of men with low-risk localised prostate cancer undergoing radical prostate cancer therapy.

Performance indicator 6: Proportion of men with locally advanced disease receiving radical prostate cancer therapy.

Specialist MDT	Performance indicator 5			Performance indicator 6		
	No. of men diagnosed with low-risk localised disease	No. men with low-risk localised disease receiving radical treatment		No. of men diagnosed with locally advanced disease	No. men with locally advanced disease receiving radical treatment	
		N	%		N	%
<b>Overall</b>	<b>218</b>	<b>22</b>	<b>10.1</b>	<b>768</b>	<b>457</b>	<b>59.5</b>
Aneurin Bevan University Health Board	42	6	13.3	81	57	66.3
Betsi Cadwaladr University Health Board	18	0	0	217	159	71.8
Cardiff and Vale University Health Board	108	11	9.8	165	124	74.1
Swansea Bay University Health Board	50	5	10.9	305	117	39.9