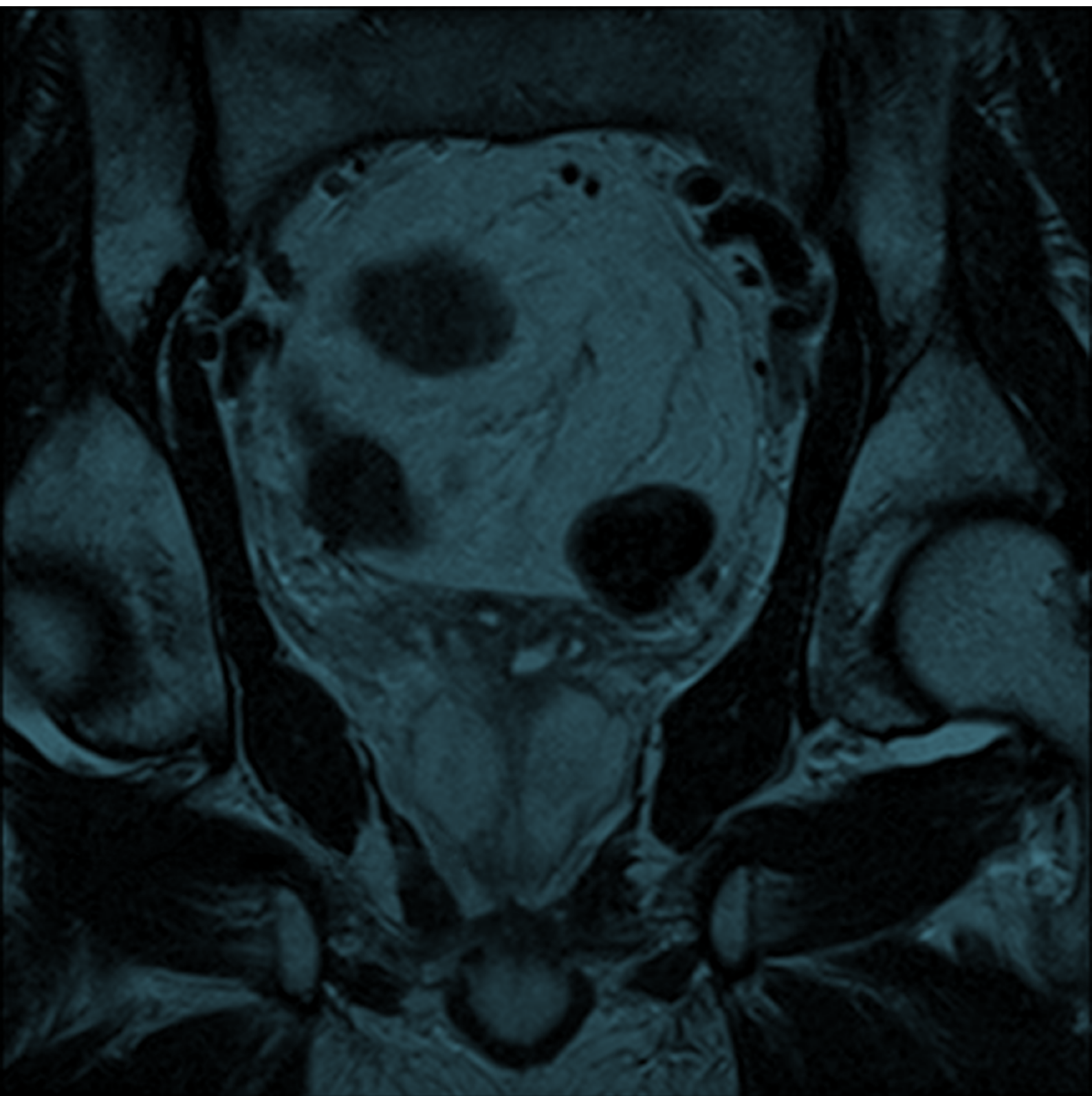


## Updated Erratum to Third Year Annual Report – Revised Table 2.1, 2.2 and Appendix 1 June 2017



# National Prostate Cancer Audit

## Erratum to Third Year Annual Report – Revised Table 2.1, 2.2 and Appendix 1

London: The Royal College of Surgeons of England, June 2017.



Registered Charity No: 212808

**The Royal College of Surgeons of England (RCS)** is an independent professional body committed to enabling surgeons to achieve and maintain the highest standards of surgical practice and patient care. As part of this it supports Audit and the evaluation of clinical effectiveness for surgery.

The NPCA is based at the The Clinical Effectiveness Unit (CEU). The CEU is an academic collaboration between The Royal College of Surgeons of England and the London School of Hygiene and Tropical Medicine, and undertakes national clinical audits and research. Since its inception in 1998, the CEU has become a national centre of expertise in methods, organisation, and logistics of large-scale studies of the quality of surgical care. The CEU managed the publication of the NPCA Annual Report, 2015.

### In partnership with:



THE BRITISH ASSOCIATION  
OF UROLOGICAL SURGEONS

**The British Association of Urological Surgeons (BAUS)** was founded in 1945 and exists to promote the highest standards of practice in urology, for the benefit of patients, by fostering education, research and clinical excellence. BAUS is a registered charity and qualified medical practitioners practising in the field of urological surgery are eligible to apply for membership. It is intended that this website will be a resource for urologists, their patients, other members of the healthcare team and the wider public.



**The British Uro-oncology Group (BUG)** was formed in 2004 to meet the needs of clinical and medical oncologists specialising in the field of urology. As the only dedicated professional association for uro-oncologists, its overriding aim is to provide a networking and support forum for discussion and exchange of research and policy ideas.



Public Health  
England

**National Cancer Registration and Analysis Service (NCRAS), Public Health England** collects patient-level data from all NHS acute providers and from a range of national data feeds. Data sources are collated using a single data processing system ('Encore') and the management structure is delivered through eight regional offices across England.

The NCRAS is the data collection partner for the NPCA.

### Commissioned by:



**The Healthcare Quality Improvement Partnership (HQIP)** is led by a consortium of the Academy of Medical Royal Colleges, the Royal College of Nursing and National Voices. Its aim is to promote quality improvement, and in particular to increase the impact that clinical audit has on healthcare quality in England and Wales. HQIP holds the contract to manage and develop the National Clinical Audit Programme, comprising more than 30 clinical audits that cover care provided to people with a wide range of medical, surgical and mental health conditions. The programme is funded by NHS England, the Welsh Government and, with some individual audits, also funded by the Health Department of the Scottish Government, DHSSPS Northern Ireland and the Channel Islands.

All rights reserved. Applications for the copyright owner's written permission to reproduce significant parts of this publication (including photocopying or storing it in any medium by electronic means and whether or not transiently or incidentally to some other use of this publication) should be addressed to the publisher. Brief extracts from this publication may be reproduced without the written permission of the copyright owner, provided that the source is fully acknowledged.

The Royal College of Surgeons of England  
35-43 Lincoln's Inn Fields  
London  
WC2A 3PE

T 020 7869 6601  
E [npc@rcseng.ac.uk](mailto:npc@rcseng.ac.uk)  
[www.npc.org.uk](http://www.npc.org.uk)

© 2017 National Prostate Cancer Audit

Designed @ [www.superbirdcreative.co.uk](http://www.superbirdcreative.co.uk)

Published June 2017 by the National Prostate Cancer Audit

---

## Update from the NPCA Project Team 22.06.17

The National Prostate Cancer Audit (NPCA) published the 2016 Annual Report for patients diagnosed with prostate cancer from 1 April 2014 to 31 March 2015 in December 2016. The National Cancer Registration and Analysis Service (NCRAS) of Public Health England, the NPCA's data collection partner, informed the NPCA team in January 2017 that the data extract that they provided for the NPCA Annual Report 2016 did not include all data submitted by the NHS Trusts. Data submissions in advance of the cut-off in April 2016 were affected.

An Erratum was published in February 2017 presenting the updated results now including results for an additional 1,093 men.

Since this time, the NPCA team have worked with NCRAS to explore queries raised concerning the allocation of patients to English NHS Trusts where the cancer was diagnosed as outlined in a ['Lessons Learnt'](#) summary document. From now on, the NPCA will allocate patients according to the 'Trust of diagnosis' and 'Date of diagnosis' identified by NCRAS's cancer registration teams. This Updated Erratum presents the following updated tables from the 2016 Annual Report using this new approach:

1. Table 2.1 (case ascertainment) - data presented by specialist Multidisciplinary Team (sMDT)
2. Table 2.2 (data completeness) - data presented by sMDT
3. Appendix 1 - the same results presented by sMDT and NHS Trust

Overall, fewer patients are now included for the diagnostic period 1 April 2014 to 31 March (34,354 patients compared with 37,141 in the previous Erratum). Data for these patients will now be included in a different reporting period including the next Annual Report. In addition, the allocation of a patient to a Trust at diagnosis may have changed. The algorithms used by NCRAS's registration teams to determine 'Trust of diagnosis' and 'Date of diagnosis' can be found [here](#).

**Table 2.1 UPDATED Estimated case-ascertainment rates for the 48 specialist MDTs in England coordinating prostate cancer services over the period 1 April 2014 and 31 March 2015.**

| specialist MDT  | Expected cases | No. patients with NPCA record | Case ascertainment: No. of NPCA records / Expected cases |
|---|----------------|-------------------------------|--|
| <b>Overall</b>  | <b>38640</b>   | <b>34354</b>                  | <b>89%</b>   |
| Barking, Havering and Redbridge University Hospitals NHS Trust        | 313            | 279                           | 89%  |
| Barts Health NHS Trust  | 562            | 479                           | 85%  |
| Bradford Teaching Hospitals NHS Foundation Trust                      | 585            | 565                           | 97%  |
| Brighton & Sussex University Hospitals NHS Trust                      | 1290           | 1149                          | 89%  |
| Cambridge University Hospitals NHS Foundation Trust                   | 1949           | 1523                          | 78%  |
| Central Manchester University Hospitals NHS Foundation Trust          | 705            | 668                           | 95%  |
| City Hospitals Sunderland NHS Foundation Trust                        | 350            | 336                           | 96%  |
| Colchester Hospital University NHS Foundation Trust                   | 1177           | 1092                          | 93%  |
| Derby Hospitals NHS Foundation Trust                                  | 718            | 662                           | 92%  |
| East & North Hertfordshire NHS Trust                                  | 804            | 738                           | 92%  |
| East Kent Hospitals University NHS Foundation Trust                   | 814            | 725                           | 89%  |
| Gloucestershire Hospitals NHS Foundation Trust                        | 619            | 502                           | 81%  |
| Guy's and St Thomas' NHS Foundation Trust                             | 1123           | 797                           | 71%  |
| Heart of England NHS Foundation Trust                                 | 752            | 705                           | 94%  |
| Hull and East Yorkshire Hospitals                                     | 936            | 888                           | 95%  |
| Imperial College Healthcare NHS Trust                                 | 900            | 709                           | 79%  |
| Lancashire Teaching Hospitals NHS Foundation Trust                    | 1038           | 978                           | 94%  |
| Leeds Teaching Hospitals NHS Trust                                    | 548            | 512                           | 93%  |
| Medway NHS Foundation Trust   | 880            | 768                           | 87%  |
| Newcastle upon Tyne Hospitals NHS Foundation Trust                    | 993            | 936                           | 94%  |
| Norfolk & Norwich University Hospitals NHS Foundation Trust           | 815            | 759                           | 93%  |
| North Bristol NHS Trust   | 1414           | 1311                          | 93%  |
| Northampton General Hospital NHS Trust                                | 449            | 432                           | 96%  |
| Nottingham University Hospitals NHS Trust                             | 536            | 493                           | 92%  |
| Oxford University Hospitals NHS Trust                                 | 977            | 839                           | 86%  |
| Plymouth Hospitals NHS Trust  | 737            | 702                           | 95%  |
| Portsmouth Hospitals NHS Trust  | 538            | 458                           | 85%  |
| Princess Alexandra Hospital NHS Trust                                 | 377            | 339                           | 90%  |
| Royal Berkshire NHS Foundation Trust                                  | 356            | 318                           | 89%  |
| Royal Devon & Exeter NHS Foundation Trust                             | 1253           | 1197                          | 96%  |
| Royal Surrey County Hospital NHS Foundation Trust                     | 1583           | 1431                          | 90%  |
| Salford Royal Hospitals NHS Foundation Trust                          | 502            | 478                           | 95%  |
| Sheffield Teaching Hospitals NHS Foundation Trust                     | 1239           | 1077                          | 87%  |
| South Tees Hospitals NHS Foundation Trust                             | 796            | 773                           | 97%  |
| Stockport NHS Foundation Trust  | 630            | 578                           | 92%  |
| The Christie NHS Foundation Trust                                     | 102            | 68                            | 67%  |
| The Mid Yorkshire Hospitals NHS Trust                                 | 347            | 282                           | 81%  |
| The Royal Bournemouth and Christchurch Hospitals NHS Foundation Trust | 780            | 744                           | 95%  |
| The Royal Liverpool & Broadgreen University Hospitals NHS Trust       | 794            | 740                           | 93%  |
| The Royal Marsden NHS Foundation Trust                                | 1176           | 910                           | 77%  |
| University College London Hospitals NHS Foundation Trust              | 799            | 635                           | 79%  |
| University Hospital Southampton NHS Foundation Trust                  | 605            | 517                           | 85%  |
| University Hospitals of North Midlands NHS Trust                      | 1276           | 1232                          | 97%  |
| University Hospital of South Manchester NHS Foundation Trust          | 194            | 183                           | 94%  |
| University Hospitals Birmingham NHS Foundation Trust                  | 624            | 558                           | 89%  |
| University Hospitals Coventry and Warwickshire NHS Trust              | 1021           | 893                           | 87%  |
| University Hospitals of Leicester NHS Trust                           | 1007           | 784                           | 78%  |
| Wirral University Teaching Hospitals NHS Foundation Trust             | 657            | 612                           | 93%  |

**Table 2.2. UPDATED Overview of data completeness for selected data items in the NPCA record by specialist MDTs in England over the period 1 April 2014 and 31 March 2015. Specialist MDTs completing PSA, Gleason and TNM for ≥50% patients are highlighted in grey. Specialist MDTs also completing ASA and performance status for ≥50% patients are highlighted in pink.**

| Specialist MDT   | No. patients with NPCA record | Performance status completed N(%) | ASA completed N(%) | PSA completed N(%) | Gleason score completed N(%) | NCPA TNM completed* N(%) | At least one planned treatment recorded N(%) | At least one treatment modality recorded (COSD) N(%) |
|--|-------------------------------|-----------------------------------|--------------------|--------------------|------------------------------|--------------------------|--|--|
| <b>Overall</b>   | <b>34354</b>                  | <b>16508 (48%)</b>                | <b>14089 (41%)</b> | <b>27398 (80%)</b> | <b>24256 (71%)</b>           | <b>21206 (62%)</b>       | <b>22688 (66%)</b>                           | <b>31877 (93%)</b>                                   |
| Barking, Havering and Redbridge University Hospitals NHS Trust | 279                           | 99 (35%)                          | 152 (54%)          | 235 (84%)          | 202 (72%)                    | 191 (68%)                | 260 (93%)                                    | 271 (97%)  |
| Barts Health NHS Trust   | 479                           | 303 (63%)                         | 133 (28%)          | 450 (94%)          | 413 (86%)                    | 432 (90%)                | 447 (93%)                                    | 469 (98%)  |
| Bradford Teaching Hospitals NHS Foundation Trust               | 565                           | 298 (53%)                         | 363 (64%)          | 515 (91%)          | 466 (82%)                    | 257 (45%)                | 263 (47%)                                    | 543 (96%)  |
| Brighton & Sussex University Hospitals NHS Trust               | 1149                          | 576 (50%)                         | 15 (1%)            | 835 (73%)          | 733 (64%)                    | 733 (64%)                | 612 (53%)                                    | 1071 (93%)   |
| Cambridge University Hospitals NHS Foundation Trust            | 1523                          | 989 (65%)                         | 663 (44%)          | 1460 (96%)         | 1202 (79%)                   | 1147 (75%)               | 1367 (90%)                                   | 1421 (93%)   |
| Central Manchester University Hospitals NHS Foundation Trust   | 668                           | 603 (90%)                         | 600 (90%)          | 635 (95%)          | 586 (88%)                    | 638 (96%)                | 623 (93%)                                    | 587 (88%)  |
| City Hospitals Sunderland NHS Foundation Trust                 | 336                           | 327 (97%)                         | 328 (98%)          | 300 (89%)          | 208 (62%)                    | 279 (83%)                | 327 (97%)                                    | 336 (100%)   |
| Colchester Hospital University NHS Foundation Trust            | 1092                          | 68 (6%)                           | 118 (11%)          | 836 (77%)          | 685 (63%)                    | 405 (37%)                | 510 (47%)                                    | 1085 (99%)   |
| Derby Hospitals NHS Foundation Trust                           | 662                           | 247 (37%)                         | 244 (37%)          | 434 (66%)          | 475 (72%)                    | 310 (47%)                | 431 (65%)                                    | 604 (91%)  |
| East & North Hertfordshire NHS Trust                           | 738                           | 352 (48%)                         | 518 (70%)          | 684 (93%)          | 491 (67%)                    | 453 (61%)                | 546 (74%)                                    | 621 (84%)  |
| East Kent Hospitals University NHS Foundation Trust            | 725                           | 606 (84%)                         | 3 (0%)             | 469 (65%)          | 532 (73%)                    | 467 (64%)                | 543 (75%)                                    | 661 (91%)  |
| Gloucestershire Hospitals NHS Foundation Trust                 | 502                           | 143 (28%)                         | 174(35%)           | 248 (49%)          | 165 (33%)                    | 88 (18%)                 | 245 (49%)                                    | 449 (89%)  |
| Guy's and St Thomas' NHS Foundation Trust                      | 797                           | 301 (38%)                         | 318 (40%)          | 738 (93%)          | 695 (87%)                    | 610 (77%)                | 653 (82%)                                    | 606 (76%)  |
| Heart of England NHS Foundation Trust                          | 705                           | 104 (15%)                         | 594 (84%)          | 680 (96%)          | 649 (92%)                    | 373 (53%)                | 627 (89%)                                    | 584 (83%)  |
| Hull and East Yorkshire Hospitals                              | 888                           | 655 (74%)                         | 758 (85%)          | 851 (96%)          | 688 (77%)                    | 707 (80%)                | 727 (82%)                                    | 871 (98%)  |
| Imperial College Healthcare NHS Trust                          | 709                           | 435 (61%)                         | 387 (55%)          | 675 (95%)          | 597 (84%)                    | 589 (83%)                | 578 (82%)                                    | 675 (95%)  |
| Lancashire Teaching Hospitals NHS Foundation Trust             | 978                           | 866 (89%)                         | 441 (45%)          | 925 (95%)          | 827 (85%)                    | 871 (89%)                | 847 (87%)                                    | 967 (99%)  |
| Leeds Teaching Hospitals NHS Trust                             | 512                           | 15 (3%)                           | 142 (28%)          | 155 (30%)          | 387 (76%)                    | 147 (29%)                | 404 (79%)                                    | 469 (92%)  |
| Medway NHS Foundation Trust                                    | 768                           | 736 (96%)                         | 476 (62%)          | 641 (83%)          | 513 (67%)                    | 733 (95%)                | 504 (66%)                                    | 721 (94%)  |
| Newcastle upon Tyne Hospitals NHS Foundation Trust             | 936                           | 370 (40%)                         | 364 (39%)          | 753 (80%)          | 749 (80%)                    | 388 (41%)                | 732 (78%)                                    | 926 (99%)  |
| Norfolk & Norwich University Hospitals NHS Foundation Trust    | 759                           | 698 (92%)                         | 496 (65%)          | 728 (96%)          | 623 (82%)                    | 340 (45%)                | 488 (64%)                                    | 750 (99%)  |
| North Bristol NHS Trust  | 1311                          | 535 (41%)                         | 340 (26%)          | 1118 (85%)         | 968 (74%)                    | 899 (69%)                | 964 (74%)                                    | 1283 (98%)   |
| Northampton General Hospital NHS Trust                         | 432                           | 203 (47%)                         | 176 (41%)          | 428 (99%)          | 374 (87%)                    | 370 (86%)                | 358 (83%)                                    | 423 (98%)  |
| Nottingham University Hospitals NHS Trust                      | 493                           | 8 (2%)                            | 24 (5%)            | 474 (96%)          | 351 (71%)                    | 252 (51%)                | 218 (44%)                                    | 461 (94%)  |

/Table 2.2 continued

| Specialist MDT  | No. patients with NPCA record | Performance status completed N(%) | ASA completed N(%) | PSA completed N(%) | Gleason score completed N(%) | NCPA TNM completed* N(%) | At least one planned treatment recorded N(%) | At least one treatment modality recorded (COSD) N(%) |
|---|-------------------------------|-----------------------------------|--------------------|--------------------|------------------------------|--------------------------|--|--|
| Oxford University Hospitals NHS Trust                                 | 839                           | 163 (19%)                         | 372 (44%)          | 586 (70%)          | 336 (40%)                    | 134 (16%)                | 484 (58%)                                    | 746 (89%)  |
| Plymouth Hospitals NHS Trust  | 702                           | 298 (42%)                         | 301 (43%)          | 675 (96%)          | 505 (72%)                    | 533 (76%)                | 589 (84%)                                    | 679 (97%)  |
| Portsmouth Hospitals NHS Trust  | 458                           | 170 (37%)                         | 317 (69%)          | 417 (91%)          | 216 (47%)                    | 207 (45%)                | 440 (96%)                                    | 201 (44%)  |
| Princess Alexandra Hospital NHS Trust                                 | 339                           | 8 (2%)                            | 2 (1%)             | 233 (69%)          | 24 (7%)                      | 235 (69%)                | 27 (8%)                                      | 313 (92%)  |
| Royal Berkshire NHS Foundation Trust                                  | 318                           | 0                                 | 59 (19%)           | 207 (65%)          | 178 (56%)                    | 83 (26%)                 | 237 (75%)                                    | 294 (92%)  |
| Royal Devon & Exeter NHS Foundation Trust                             | 1197                          | 786 (66%)                         | 821 (69%)          | 1085 (91%)         | 966 (81%)                    | 1019 (85%)               | 1015 (85%)                                   | 1179 (98%)   |
| Royal Surrey County Hospital NHS Foundation Trust                     | 1431                          | 360 (25%)                         | 441 (31%)          | 979 (68%)          | 884 (62%)                    | 578 (40%)                | 469 (33%)                                    | 1300 (91%)   |
| Salford Royal Hospitals NHS Foundation Trust                          | 478                           | 400 (84%)                         | 402 (84%)          | 454 (95%)          | 439 (92%)                    | 423 (88%)                | 376 (79%)                                    | 399 (83%)  |
| Sheffield Teaching Hospitals NHS Foundation Trust                     | 1077                          | 796 (74%)                         | 636 (59%)          | 790 (73%)          | 774 (72%)                    | 845 (78%)                | 730 (68%)                                    | 1043 (97%)   |
| South Tees Hospitals NHS Foundation Trust                             | 773                           | 647 (84%)                         | 127 (16%)          | 735 (95%)          | 671 (87%)                    | 470 (61%)                | 393 (51%)                                    | 767 (99%)  |
| Stockport NHS Foundation Trust  | 578                           | 174 (30%)                         | 59 (10%)           | 429 (74%)          | 338 (58%)                    | 344 (60%)                | 174 (30%)                                    | 483 (84%)  |
| The Christie NHS Foundation Trust                                     | 68                            | 43 (63%)                          | 38 (56%)           | 44 (65%)           | 41 (60%)                     | 41 (60%)                 | 43 (63%)                                     | 36 (53%)   |
| The Mid Yorkshire Hospitals NHS Trust                                 | 282                           | 267 (95%)                         | 266 (94%)          | 266 (94%)          | 250 (89%)                    | 267 (95%)                | 269 (95%)                                    | 265 (94%)  |
| The Royal Bournemouth and Christchurch Hospitals NHS Foundation Trust | 744                           | 319 (43%)                         | 12 (2%)            | 610 (82%)          | 531 (71%)                    | 387 (52%)                | 333 (45%)                                    | 707 (95%)  |
| The Royal Liverpool & Broadgreen University Hospitals NHS Trust       | 740                           | 454 (61%)                         | 516 (70%)          | 715 (97%)          | 582 (79%)                    | 609 (82%)                | 496 (67%)                                    | 708 (96%)  |
| The Royal Marsden NHS Foundation Trust                                | 910                           | 292 (32%)                         | 193 (21%)          | 587 (65%)          | 410 (45%)                    | 711 (78%)                | 541 (59%)                                    | 847 (93%)  |
| University College London Hospitals NHS Foundation Trust              | 635                           | 68 (11%)                          | 49 (8%)            | 229 (36%)          | 217 (34%)                    | 265 (42%)                | 222 (35%)                                    | 577 (91%)  |
| University Hospital Southampton NHS Foundation Trust                  | 517                           | 282 (55%)                         | 218 (42%)          | 355 (69%)          | 393 (76%)                    | 313 (61%)                | 354 (68%)                                    | 494 (96%)  |
| University Hospitals of North Midlands NHS Trust                      | 1232                          | 65 (5%)                           | 148 (12%)          | 404 (33%)          | 804 (65%)                    | 328 (27%)                | 382 (31%)                                    | 1215 (99%)   |
| University Hospital of South Manchester NHS Foundation Trust          | 183                           | 128 (70%)                         | 132 (72%)          | 173 (95%)          | 159 (87%)                    | 146 (80%)                | 146 (80%)                                    | 178 (97%)  |
| University Hospitals Birmingham NHS Foundation Trust                  | 558                           | 89 (16%)                          | 34 (6%)            | 508 (91%)          | 486 (87%)                    | 280 (50%)                | 311 (56%)                                    | 541 (97%)  |
| University Hospitals Coventry and Warwickshire NHS Trust              | 893                           | 554 (62%)                         | 598 (67%)          | 840 (94%)          | 777 (87%)                    | 604 (68%)                | 817 (91%)                                    | 740 (83%)  |
| University Hospitals of Leicester NHS Trust                           | 784                           | 66 (8%)                           | 21 (3%)            | 222 (28%)          | 176 (22%)                    | 179 (23%)                | 29 (4%)                                      | 738 (94%)  |
| Wirral University Teaching Hospitals NHS Foundation Trust             | 612                           | 542 (89%)                         | 500 (82%)          | 588 (96%)          | 520 (85%)                    | 526 (86%)                | 537 (88%)                                    | 573 (94%)  |

\*% of total for whom all three T, N and M are non-missing (X allowed)

**Appendix 1. UPDATED Participation in the NPCA Prospective Audit, case-ascertainment and data completeness of key data items by Trust<sup>1</sup> and specialist MDT in England over the period 1 April 2014 and 31 March 2015.**

| Specialist MDT / Trust  | No. of expected cases | No. patients with NPCA record | Case ascertainment: No. of NPCA records / Expected cases | Performance status completed N(%) | ASA completed N(%) | PSA completed N(%) | Gleason Score Completed N(%) | TNM Completed <sup>2</sup> N(%) | ≥1 planned treatment recorded N (%) | ≥1 Cancer treatment modality N (%) |
|---|-----------------------|-------------------------------|--|-----------------------------------|--------------------|--------------------|------------------------------|---------------------------------|-------------------------------------|------------------------------------|
| <b>Overall</b>  | <b>38640</b>          | <b>34354</b>                  | <b>89%</b>   | <b>16508 (48%)</b>                | <b>14089 (41%)</b> | <b>27398 (80%)</b> | <b>24256 (71%)</b>           | <b>21206 (62%)</b>              | <b>22688 (66%)</b>                  | <b>31877 (93%)</b>                 |
| Barking, Havering and Redbridge University Hospitals NHS Trust  | 313                   | 279                           | 89%  | 99 (35%)                          | 152 (54%)          | 235 (84%)          | 202 (72%)                    | 191 (68%)                       | 260 (93%)                           | 271 (97%)                          |
| Barking, Havering and Redbridge Hospitals NHS Trust             | 313                   | 279                           | 89%  | 99 (35%)                          | 152 (54%)          | 235 (84%)          | 202 (72%)                    | 191 (68%)                       | 260 (93%)                           | 271 (97%)                          |
| Barts Health NHS Trust  | 562                   | 479                           | 85%  | 303 (63%)                         | 133 (28%)          | 450 (94%)          | 413 (86%)                    | 432 (90%)                       | 447 (93%)                           | 469 (98%)                          |
| Barts Health NHS Trust  | 479                   | 399                           | 83%  | 230 (58%)                         | 61 (15%)           | 373 (93%)          | 346 (87%)                    | 357 (89%)                       | 371 (93%)                           | 389 (97%)                          |
| Homerton University Hospital NHS Foundation Trust               | 83                    | 80                            | 96%  | 73 (91%)                          | 72 (90%)           | 77 (96%)           | 67 (84%)                     | 75 (94%)                        | 76 (95%)                            | 80 (100%)                          |
| Bradford Teaching Hospitals NHS Foundation Trust                | 585                   | 565                           | 97%  | 298 (53%)                         | 363 (64%)          | 515 (91%)          | 466 (82%)                    | 257 (45%)                       | 263 (47%)                           | 543 (96%)                          |
| Airedale NHS Trust  | 127                   | 127                           | 100%   | 125 (98%)                         | 118 (93%)          | 118 (93%)          | 108 (85%)                    | 88 (69%)                        | 48 (38%)                            | 123 (97%)                          |
| Bradford Teaching Hospitals NHS Foundation Trust                | 170                   | 154                           | 91%  | 6 (4%)                            | 131 (85%)          | 133 (86%)          | 132 (86%)                    | 106 (69%)                       | 86 (56%)                            | 146 (95%)                          |
| Calderdale And Huddersfield NHS Foundation Trust                | 288                   | 284                           | 99%  | 167 (59%)                         | 114 (40%)          | 264 (93%)          | 226 (80%)                    | 63 (22%)                        | 129 (45%)                           | 274 (96%)                          |
| Brighton & Sussex University Hospitals NHS Trust                | 1290                  | 1149                          | 89%  | 576 (50%)                         | 15 (1%)            | 835 (73%)          | 733 (64%)                    | 733 (64%)                       | 612 (53%)                           | 1071 (93%)                         |
| Brighton and Sussex University Hospitals NHS Trust              | 345                   | 305                           | 88%  | 13 (4%)                           | 0                  | 159 (52%)          | 157 (51%)                    | 115 (38%)                       | 14 (5%)                             | 269 (88%)                          |
| East Sussex Healthcare NHS Trust                                | 372                   | 309                           | 83%  | 37 (12%)                          | 14 (5%)            | 147 (48%)          | 133 (43%)                    | 108 (35%)                       | 78 (25%)                            | 292 (94%)                          |
| Western Sussex Hospitals NHS Trust                              | 573                   | 535                           | 93%  | 526 (98%)                         | 1 (0%)             | 529 (99%)          | 443 (83%)                    | 510 (95%)                       | 520 (97%)                           | 510 (95%)                          |
| Cambridge University Hospitals NHS Foundation Trust             | 1949                  | 1523                          | 78%  | 989 (65%)                         | 663 (44%)          | 1460 (96%)         | 1202 (79%)                   | 1147 (75%)                      | 1367 (90%)                          | 1421 (93%)                         |
| Bedford Hospital NHS Trust                                      | 212                   | 208                           | 98%  | 206 (99%)                         | 204 (98%)          | 208 (100%)         | 164 (79%)                    | 206 (99%)                       | 206 (99%)                           | 203 (98%)                          |
| Cambridge University Hospitals NHS Foundation Trust             | 417                   | 75                            | 18%  | 18 (24%)                          | 25 (33%)           | 57 (76%)           | 20 (27%)                     | 55 (73%)                        | 67 (89%)                            | 41 (55%)                           |
| Hinchingbrooke Health Care NHS Trust                            | 103                   | 98                            | 95%  | 91 (93%)                          | 62 (63%)           | 88 (90%)           | 79 (81%)                     | 60 (61%)                        | 85 (87%)                            | 95 (97%)                           |
| Peterborough and Stamford Hospitals NHS Foundation Trust        | 325                   | 313                           | 96%  | 225 (72%)                         | 90 (29%)           | 307 (98%)          | 250 (80%)                    | 253 (81%)                       | 263 (84%)                           | 289 (92%)                          |
| Queen Elizabeth Hospital NHS Trust                              | 260                   | 245                           | 94%  | 220 (90%)                         | 202 (82%)          | 243 (99%)          | 209 (85%)                    | 209 (85%)                       | 243 (99%)                           | 240 (98%)                          |
| The Ipswich Hospital NHS Trust                                  | 369                   | 341                           | 92%  | 112 (33%)                         | 70 (21%)           | 335 (98%)          | 269 (79%)                    | 320 (94%)                       | 328 (96%)                           | 321 (94%)                          |
| West Suffolk Hospitals NHS Trust                                | 263                   | 243                           | 92%  | 117 (48%)                         | 10 (4%)            | 222 (91%)          | 211 (87%)                    | 44 (18%)                        | 175 (72%)                           | 232 (95%)                          |
| Central Manchester University Hospitals NHS Foundation Trust    | 705                   | 668                           | 95%  | 603 (90%)                         | 600 (90%)          | 635 (95%)          | 586 (88%)                    | 638 (96%)                       | 623 (93%)                           | 587 (88%)                          |
| Central Manchester University Hospitals NHS Foundation Trust    | 159                   | 139                           | 87%  | 97 (70%)                          | 104 (75%)          | 109 (78%)          | 110 (79%)                    | 125 (90%)                       | 108 (78%)                           | 112 (81%)                          |
| Pennine Acute Hospitals NHS Trust                               | 546                   | 529                           | 97%  | 506 (96%)                         | 496 (94%)          | 526 (99%)          | 476 (90%)                    | 513 (97%)                       | 515 (97%)                           | 475 (90%)                          |
| City Hospitals Sunderland NHS Foundation Trust                  | 350                   | 336                           | 96%  | 327 (97%)                         | 328 (98%)          | 300 (89%)          | 208 (62%)                    | 279 (83%)                       | 327 (97%)                           | 336 (100%)                         |
| City Hospitals Sunderland NHS Foundation Trust                  | 325                   | 315                           | 97%  | 308 (98%)                         | 308 (98%)          | 285 (90%)          | 208 (66%)                    | 263 (83%)                       | 307 (97%)                           | 315 (100%)                         |
| South Tyneside NHS Foundation Trust †                           | 25                    | N/A                           | N/A  | N/A                               | N/A                | N/A                | N/A                          | N/A                             | N/A                                 | N/A                                |
| Colchester Hospital University NHS Foundation Trust             | 1177                  | 1092                          | 93%  | 68 (6%)                           | 118 (11%)          | 836 (77%)          | 685 (63%)                    | 405 (37%)                       | 510 (47%)                           | 1085 (99%)                         |
| Basildon and Thurrock University Hospitals NHS Foundation Trust | 197                   | 180                           | 91%  | 56 (31%)                          | 46 (26%)           | 177 (98%)          | 129 (72%)                    | 98 (54%)                        | 148 (82%)                           | 178 (99%)                          |
| Colchester Hospital University NHS Foundation Trust             | 376                   | 346                           | 92%  | 0                                 | 1 (0%)             | 172 (50%)          | 185 (53%)                    | 15 (4%)                         | 15 (4%)                             | 345 (100%)                         |
| Mid Essex Hospital Services NHS Trust                           | 300                   | 272                           | 91%  | 6 (2%)                            | 9 (3%)             | 209 (77%)          | 156 (57%)                    | 98 (36%)                        | 119 (44%)                           | 269 (99%)                          |
| Southend Hospital NHS Trust                                     | 304                   | 294                           | 97%  | 6 (2%)                            | 62 (21%)           | 278 (95%)          | 215 (73%)                    | 194 (66%)                       | 228 (78%)                           | 293 (100%)                         |
| Derby Hospitals NHS Foundation Trust                            | 718                   | 662                           | 92%  | 247 (37%)                         | 244 (37%)          | 434 (66%)          | 475 (72%)                    | 310 (47%)                       | 431 (65%)                           | 604 (91%)                          |

| Specialist MDT / Trust   | No. of expected cases | No. patients with NPCA record | Case ascertainment: No. of NPCA records / Expected cases | Performance status completed N(%) | ASA completed N(%) | PSA completed N(%) | Gleason Score Completed N(%) | TNM Completed <sup>2</sup> N(%) | ≥1 planned treatment recorded N (%) | ≥1 Cancer treatment recorded N (%) |
|--|-----------------------|-------------------------------|--|-----------------------------------|--------------------|--------------------|------------------------------|---------------------------------|-------------------------------------|------------------------------------|
| Burton Hospitals NHS Foundation Trust                          | 129                   | 123                           | 95%  | 117 (95%)                         | 111 (90%)          | 122 (99%)          | 102 (83%)                    | 112 (91%)                       | 117 (95%)                           | 121 (98%)                          |
| Derby Hospitals NHS Foundation Trust                           | 361                   | 349                           | 97%  | 60 (17%)                          | 79 (23%)           | 295 (85%)          | 223 (64%)                    | 191 (55%)                       | 281 (81%)                           | 328 (94%)                          |
| Sherwood Forest Hospitals NHS Foundation Trust                 | 228                   | 190                           | 83%  | 70 (37%)                          | 54 (28%)           | 17 (9%)            | 150 (79%)                    | 7 (4%)                          | 33 (17%)                            | 155 (82%)                          |
| East & North Hertfordshire NHS Trust                           | 804                   | 738                           | 92%  | 352 (48%)                         | 518 (70%)          | 684 (93%)          | 491 (67%)                    | 453 (61%)                       | 546 (74%)                           | 621 (84%)                          |
| East and North Hertfordshire NHS Trust                         | 373                   | 358                           | 96%  | 132 (37%)                         | 160 (45%)          | 330 (92%)          | 277 (77%)                    | 147 (41%)                       | 198 (55%)                           | 343 (96%)                          |
| Luton and Dunstable Hospital NHS Trust                         | 181                   | 158                           | 87%  | 14 (9%)                           | 148 (94%)          | 150 (95%)          | 106 (67%)                    | 99 (63%)                        | 143 (91%)                           | 133 (84%)                          |
| West Hertfordshire Hospitals NHS Trust                         | 250                   | 222                           | 89%  | 206 (93%)                         | 210 (95%)          | 204 (92%)          | 108 (49%)                    | 207 (93%)                       | 205 (92%)                           | 145 (65%)                          |
| East Kent Hospitals University NHS Foundation Trust            | 814                   | 725                           | 89%  | 606 (84%)                         | 3 (0%)             | 469 (65%)          | 532 (73%)                    | 467 (64%)                       | 543 (75%)                           | 661 (91%)                          |
| East Kent Hospitals NHS Trust                                  | 814                   | 725                           | 89%  | 606 (84%)                         | 3 (0%)             | 469 (65%)          | 532 (73%)                    | 467 (64%)                       | 543 (75%)                           | 661 (91%)                          |
| Gloucestershire Hospitals NHS Foundation Trust                 | 619                   | 502                           | 81%  | 143 (28%)                         | 174 (35%)          | 248 (49%)          | 165 (33%)                    | 88 (18%)                        | 245 (49%)                           | 449 (89%)                          |
| Gloucestershire Hospitals NHS Foundation Trust                 | 458                   | 355                           | 78%  | 94 (26%)                          | 147 (41%)          | 192 (54%)          | 158 (45%)                    | 23 (6%)                         | 231 (65%)                           | 339 (95%)                          |
| Wye Valley NHS Trust   | 161                   | 147                           | 91%  | 49 (33%)                          | 27 (18%)           | 56 (38%)           | 7 (5%)                       | 65 (44%)                        | 14 (10%)                            | 110 (75%)                          |
| Guy's and St Thomas' NHS Foundation Trust                      | 1123                  | 797                           | 71%  | 301 (38%)                         | 318 (40%)          | 738 (93%)          | 695 (87%)                    | 610 (77%)                       | 653 (82%)                           | 606 (76%)                          |
| Guy's and St Thomas' NHS Foundation Trust                      | 501                   | 370                           | 74%  | 56 (15%)                          | 91 (25%)           | 363 (98%)          | 345 (93%)                    | 343 (93%)                       | 356 (96%)                           | 263 (71%)                          |
| King's College Hospital NHS Foundation Trust                   | 414                   | 260                           | 63%  | 184 (71%)                         | 203 (78%)          | 245 (94%)          | 225 (87%)                    | 209 (80%)                       | 239 (92%)                           | 217 (83%)                          |
| Lewisham Hospital NHS Trust                                    | 208                   | 167                           | 80%  | 61 (37%)                          | 24 (14%)           | 130 (78%)          | 125 (75%)                    | 58 (35%)                        | 58 (35%)                            | 126 (75%)                          |
| Heart of England NHS Foundation Trust                          | 752                   | 705                           | 94%  | 104 (15%)                         | 594 (84%)          | 680 (96%)          | 649 (92%)                    | 373 (53%)                       | 627 (89%)                           | 584 (83%)                          |
| Heart of England NHS Foundation Trust                          | 600                   | 560                           | 93%  | 56 (10%)                          | 553 (99%)          | 558 (100%)         | 549 (98%)                    | 310 (55%)                       | 515 (92%)                           | 447 (80%)                          |
| Walsall Hospitals NHS Trust                                    | 152                   | 145                           | 95%  | 48 (33%)                          | 41 (28%)           | 122 (84%)          | 100 (69%)                    | 63 (43%)                        | 112 (77%)                           | 137 (94%)                          |
| Hull and East Yorkshire Hospitals                              | 936                   | 888                           | 95%  | 655 (74%)                         | 758 (85%)          | 851 (96%)          | 688 (77%)                    | 707 (80%)                       | 727 (82%)                           | 871 (98%)                          |
| Hull and East Yorkshire Hospitals NHS Trust                    | 317                   | 301                           | 95%  | 284 (94%)                         | 284 (94%)          | 286 (95%)          | 237 (79%)                    | 197 (65%)                       | 203 (67%)                           | 296 (98%)                          |
| Northern Lincolnshire and Goole Hospitals NHS Foundation Trust | 268                   | 256                           | 96%  | 148 (58%)                         | 151 (59%)          | 255 (100%)         | 199 (78%)                    | 195 (76%)                       | 251 (98%)                           | 256 (100%)                         |
| York Hospitals NHS Trust                                       | 351                   | 331                           | 94%  | 223 (67%)                         | 323 (98%)          | 310 (94%)          | 252 (76%)                    | 315 (95%)                       | 273 (82%)                           | 319 (96%)                          |
| Imperial College Healthcare NHS Trust                          | 900                   | 709                           | 79%  | 435 (61%)                         | 387 (55%)          | 675 (95%)          | 597 (84%)                    | 589 (83%)                       | 578 (82%)                           | 675 (95%)                          |
| Chelsea and Westminster Healthcare NHS Trust ††                | 121                   | 103                           | 85%  | 93 (90%)                          | 89 (86%)           | 99 (96%)           | 75 (73%)                     | 95 (92%)                        | 91 (88%)                            | 100 (97%)                          |
| Imperial College Healthcare NHS Trust                          | 381                   | 293                           | 77%  | 265 (90%)                         | 244 (83%)          | 277 (95%)          | 265 (90%)                    | 267 (91%)                       | 249 (85%)                           | 269 (92%)                          |
| North West London Hospitals NHS Trust                          | 262                   | 200                           | 76%  | 29 (15%)                          | 17 (9%)            | 198 (99%)          | 169 (85%)                    | 176 (88%)                       | 146 (73%)                           | 198 (99%)                          |
| The Hillingdon Hospital NHS Trust                              | 136                   | 113                           | 83%  | 48 (42%)                          | 37 (33%)           | 101 (89%)          | 88 (78%)                     | 51 (45%)                        | 92 (81%)                            | 108 (96%)                          |
| Lancashire Teaching Hospitals NHS Foundation Trust             | 1038                  | 978                           | 94%  | 866 (89%)                         | 441 (45%)          | 925 (95%)          | 827 (85%)                    | 871 (89%)                       | 847 (87%)                           | 967 (99%)                          |
| Lancashire Teaching Hospitals NHS Foundation Trust             | 1047                  | 1049                          | 100%   | 908 (87%)                         | 452 (43%)          | 969 (92%)          | 875 (83%)                    | 907 (86%)                       | 885 (84%)                           | 883 (84%)                          |
| Blackpool, Fylde and Wyre Hospitals NHS Trust                  | 227                   | 191                           | 84%  | 145 (76%)                         | 16 (8%)            | 181 (95%)          | 169 (88%)                    | 187 (98%)                       | 157 (82%)                           | 190 (99%)                          |
| East Lancashire Hospitals NHS Trust                            | 238                   | 232                           | 97%  | 232 (100%)                        | 232 (100%)         | 230 (99%)          | 212 (91%)                    | 209 (90%)                       | 212 (91%)                           | 231 (100%)                         |
| Lancashire Teaching Hospitals NHS Foundation Trust             | 317                   | 305                           | 96%  | 296 (97%)                         | 32 (10%)           | 299 (98%)          | 259 (85%)                    | 291 (95%)                       | 295 (97%)                           | 297 (97%)                          |
| University Hospitals of Morecambe Bay NHS Trust                | 256                   | 250                           | 98%  | 193 (77%)                         | 161 (64%)          | 215 (86%)          | 187 (75%)                    | 184 (74%)                       | 183 (73%)                           | 249 (100%)                         |



| Specialist MDT / Trust                                      | No. of expected cases | No. patients with NPCA record | Case ascertainment: No. of NPCA records /Expected cases | Performance status completed N(%) | ASA completed N(%) | PSA completed N(%) | Gleason Score Completed N(%) | TNM Completed <sup>2</sup> N(%) | ≥1 planned treatment recorded N (%) | ≥1 Cancer treatment modality N (%) |
|---|-----------------------|-------------------------------|---|-----------------------------------|--------------------|--------------------|------------------------------|---------------------------------|-------------------------------------|------------------------------------|
| Leeds Teaching Hospitals NHS Trust                          | 548                   | 512                           | 93%   | 15 (3%)                           | 142 (28%)          | 155 (30%)          | 387 (76%)                    | 147 (29%)                       | 404 (79%)                           | 469 (92%)                          |
| Harrogate and District NHS Foundation Trust                 | 147                   | 136                           | 93%   | 9 (7%)                            | 110 (81%)          | 133 (98%)          | 114 (84%)                    | 132 (97%)                       | 135 (99%)                           | 134 (99%)                          |
| Leeds Teaching Hospitals NHS Trust                          | 401                   | 376                           | 94%   | 6 (2%)                            | 32 (9%)            | 22 (6%)            | 273 (73%)                    | 15 (4%)                         | 269 (72%)                           | 335 (89%)                          |
| Medway NHS Foundation Trust                                 | 880                   | 768                           | 87%   | 736 (96%)                         | 476 (62%)          | 641 (83%)          | 513 (67%)                    | 733 (95%)                       | 504 (66%)                           | 721 (94%)                          |
| Dartford and Gravesham NHS Trust                            | 112                   | 100                           | 89%   | 88 (88%)                          | 15 (15%)           | 37 (37%)           | 78 (78%)                     | 84 (84%)                        | 39 (39%)                            | 98 (98%)                           |
| Maidstone and Tunbridge Wells NHS Trust                     | 632                   | 559                           | 88%   | 540 (97%)                         | 366 (65%)          | 502 (90%)          | 421 (75%)                    | 544 (97%)                       | 424 (76%)                           | 523 (94%)                          |
| Medway NHS Foundation Trust                                 | 136                   | 109                           | 80%   | 108 (99%)                         | 95 (87%)           | 102 (94%)          | 14 (13%)                     | 105 (96%)                       | 41 (38%)                            | 100 (92%)                          |
| Newcastle upon Tyne Hospitals NHS Foundation Trust          | 993                   | 936                           | 94%   | 370 (40%)                         | 364 (39%)          | 753 (80%)          | 749 (80%)                    | 388 (41%)                       | 732 (78%)                           | 926 (99%)                          |
| Gateshead Health NHS Foundation Trust                       | 99                    | 91                            | 92%   | 80 (88%)                          | 78 (86%)           | 91 (100%)          | 82 (90%)                     | 65 (71%)                        | 89 (98%)                            | 90 (99%)                           |
| Newcastle Upon Tyne Hospitals NHS Foundation Trust          | 390                   | 369                           | 95%   | 121 (33%)                         | 116 (31%)          | 292 (79%)          | 306 (83%)                    | 157 (43%)                       | 293 (79%)                           | 366 (99%)                          |
| North Cumbria Acute Hospitals NHS Trust                     | 259                   | 240                           | 93%   | 160 (67%)                         | 156 (65%)          | 165 (69%)          | 158 (66%)                    | 101 (42%)                       | 174 (73%)                           | 238 (99%)                          |
| Northumbria Healthcare NHS Foundation Trust                 | 245                   | 236                           | 96%   | 9 (4%)                            | 14 (6%)            | 205 (87%)          | 203 (86%)                    | 65 (28%)                        | 176 (75%)                           | 232 (98%)                          |
| Norfolk & Norwich University Hospitals NHS Foundation Trust | 815                   | 759                           | 93%   | 698 (92%)                         | 496 (65%)          | 728 (96%)          | 623 (82%)                    | 340 (45%)                       | 488 (64%)                           | 750 (99%)                          |
| James Paget University Hospitals NHS Foundation Trust       | 195                   | 189                           | 97%   | 158 (84%)                         | 98 (52%)           | 189 (100%)         | 145 (77%)                    | 109 (58%)                       | 40 (21%)                            | 189 (100%)                         |
| Norfolk and Norwich University Hospital NHS Trust           | 620                   | 570                           | 92%   | 540 (95%)                         | 398 (70%)          | 539 (95%)          | 478 (84%)                    | 231 (41%)                       | 448 (79%)                           | 561 (98%)                          |
| North Bristol NHS Trust                                     | 1414                  | 1311                          | 93%   | 535 (41%)                         | 340 (26%)          | 1118 (85%)         | 968 (74%)                    | 899 (69%)                       | 964 (74%)                           | 1283 (98%)                         |
| Great Western Hospitals NHS Foundation Trust                | 219                   | 193                           | 88%   | 157 (81%)                         | 1 (1%)             | 188 (97%)          | 166 (86%)                    | 191 (99%)                       | 186 (96%)                           | 190 (98%)                          |
| North Bristol NHS Trust                                     | 608                   | 559                           | 92%   | 36 (6%)                           | 25 (4%)            | 385 (69%)          | 376 (67%)                    | 192 (34%)                       | 272 (49%)                           | 551 (99%)                          |
| Royal United Hospital Bath NHS Trust                        | 348                   | 331                           | 95%   | 132 (40%)                         | 113 (34%)          | 326 (98%)          | 275 (83%)                    | 310 (94%)                       | 315 (95%)                           | 318 (96%)                          |
| Weston Area Health NHS Trust                                | 139                   | 132                           | 95%   | 119 (90%)                         | 120 (91%)          | 130 (98%)          | 102 (77%)                    | 121 (92%)                       | 125 (95%)                           | 129 (98%)                          |
| Yeovil District Hospital NHS Foundation Trust               | 100                   | 96                            | 96%   | 91 (95%)                          | 81 (84%)           | 89 (93%)           | 49 (51%)                     | 85 (89%)                        | 66 (69%)                            | 95 (99%)                           |
| Northampton General Hospital NHS Trust                      | 449                   | 432                           | 96%   | 203 (47%)                         | 176 (41%)          | 428 (99%)          | 374 (87%)                    | 370 (86%)                       | 358 (83%)                           | 423 (98%)                          |
| Kettering General Hospital NHS Trust                        | 232                   | 227                           | 98%   | 42 (19%)                          | 7 (3%)             | 227 (100%)         | 203 (89%)                    | 197 (87%)                       | 176 (78%)                           | 224 (99%)                          |
| Northampton General Hospital NHS Trust                      | 217                   | 205                           | 94%   | 161 (79%)                         | 169 (82%)          | 201 (98%)          | 171 (83%)                    | 173 (84%)                       | 182 (89%)                           | 199 (97%)                          |
| Nottingham University Hospitals NHS Trust                   | 536                   | 493                           | 92%   | 8 (2%)                            | 24 (5%)            | 474 (96%)          | 351 (71%)                    | 252 (51%)                       | 218 (44%)                           | 461 (94%)                          |
| Nottingham University Hospitals NHS Trust                   | 536                   | 493                           | 92%   | 8 (2%)                            | 24 (5%)            | 474 (96%)          | 351 (71%)                    | 252 (51%)                       | 218 (44%)                           | 461 (94%)                          |
| Oxford University Hospitals NHS Trust                       | 977                   | 839                           | 86%   | 163 (19%)                         | 372 (44%)          | 586 (70%)          | 336 (40%)                    | 134 (16%)                       | 484 (58%)                           | 746 (89%)                          |
| Buckinghamshire Healthcare NHS Trust                        | 297                   | 247                           | 83%   | 32 (13%)                          | 95 (38%)           | 183 (74%)          | 185 (75%)                    | 87 (35%)                        | 91 (37%)                            | 177 (72%)                          |
| Milton Keynes General Hospital NHS Trust                    | 203                   | 166                           | 82%   | 79 (48%)                          | 3 (2%)             | 120 (72%)          | 141 (85%)                    | 23 (14%)                        | 58 (35%)                            | 158 (95%)                          |
| Oxford University Hospitals NHS Trust                       | 477                   | 426                           | 89%   | 52 (12%)                          | 274 (64%)          | 283 (66%)          | 10 (2%)                      | 24 (6%)                         | 335 (79%)                           | 411 (96%)                          |
| Plymouth Hospitals NHS Trust                                | 737                   | 702                           | 95%   | 298 (42%)                         | 301 (43%)          | 675 (96%)          | 505 (72%)                    | 533 (76%)                       | 589 (84%)                           | 679 (97%)                          |
| Plymouth Hospitals NHS Trust                                | 316                   | 308                           | 97%   | 21 (7%)                           | 38 (12%)           | 286 (93%)          | 253 (82%)                    | 226 (73%)                       | 292 (95%)                           | 300 (97%)                          |
| Royal Cornwall Hospitals NHS Trust                          | 421                   | 394                           | 94%   | 277 (70%)                         | 263 (67%)          | 389 (99%)          | 252 (64%)                    | 307 (78%)                       | 297 (75%)                           | 379 (96%)                          |
| Portsmouth Hospitals NHS Trust                              | 538                   | 458                           | 85%   | 170 (37%)                         | 317 (69%)          | 417 (91%)          | 216 (47%)                    | 207 (45%)                       | 440 (96%)                           | 201 (44%)                          |

| Specialist MDT / Trust                                 | No. of expected cases | No. patients with NPCA record | Case ascertainment: No. of NPCA records / Expected cases | Performance status completed N(%) | ASA completed N(%) | PSA completed N(%) | Gleason Score Completed N(%) | TNM Completed <sup>2</sup> N(%) | ≥1 planned treatment recorded N (%) | ≥1 Cancer treatment recorded N (%) |
|--|-----------------------|-------------------------------|--|-----------------------------------|--------------------|--------------------|------------------------------|---------------------------------|-------------------------------------|------------------------------------|
| Isle of Wight NHS Trust                                | 166                   | 165                           | 99%  | 160 (97%)                         | 120 (73%)          | 155 (94%)          | 140 (85%)                    | 162 (98%)                       | 155 (94%)                           | 158 (96%)                          |
| Portsmouth Hospitals NHS Trust                         | 372                   | 293                           | 79%  | 10 (3%)                           | 197 (67%)          | 262 (89%)          | 76 (26%)                     | 45 (15%)                        | 285 (97%)                           | 43 (15%)                           |
| Princess Alexandra Hospital NHS Trust                  | 377                   | 339                           | 90%  | 8 (2%)                            | 2 (1%)             | 233 (69%)          | 24 (7%)                      | 235 (69%)                       | 27 (8%)                             | 313 (92%)                          |
| North Middlesex University Hospital NHS Trust          | 83                    | 66                            | 80%  | 6 (9%)                            | 2 (3%)             | 24 (36%)           | 20 (30%)                     | 36 (55%)                        | 1 (2%)                              | 53 (80%)                           |
| Princess Alexandra Hospital NHS Trust                  | 294                   | 273                           | 93%  | 2 (1%)                            | 0                  | 209 (77%)          | 4 (1%)                       | 199 (73%)                       | 26 (10%)                            | 260 (95%)                          |
| Royal Berkshire NHS Foundation Trust                   | 356                   | 318                           | 89%  | 0                                 | 59 (19%)           | 207 (65%)          | 178 (56%)                    | 83 (26%)                        | 237 (75%)                           | 294 (92%)                          |
| Royal Berkshire NHS Foundation Trust †                 | 353                   | 397                           | >100%  | 1 (0%)                            | 67 (17%)           | 261 (66%)          | 229 (58%)                    | 103 (26%)                       | 311 (78%)                           | 289 (73%)                          |
| Royal Devon & Exeter NHS Foundation Trust              | 1253                  | 1197                          | 96%  | 786 (66%)                         | 821 (69%)          | 1085 (91%)         | 966 (81%)                    | 1019 (85%)                      | 1015 (85%)                          | 1179 (98%)                         |
| Northern Devon Healthcare NHS Trust                    | 187                   | 177                           | 95%  | 147 (83%)                         | 148 (84%)          | 158 (89%)          | 140 (79%)                    | 123 (69%)                       | 145 (82%)                           | 177 (100%)                         |
| Royal Devon and Exeter NHS Foundation Trust            | 495                   | 472                           | 95%  | 456 (97%)                         | 456 (97%)          | 455 (96%)          | 430 (91%)                    | 461 (98%)                       | 469 (99%)                           | 467 (99%)                          |
| South Devon Healthcare NHS Foundation Trust            | 279                   | 267                           | 96%  | 39 (15%)                          | 87 (33%)           | 218 (82%)          | 194 (73%)                    | 240 (90%)                       | 241 (90%)                           | 260 (97%)                          |
| Taunton and Somerset NHS Trust                         | 292                   | 281                           | 96%  | 144 (51%)                         | 130 (46%)          | 254 (90%)          | 202 (72%)                    | 195 (69%)                       | 160 (57%)                           | 275 (98%)                          |
| Royal Surrey County Hospital NHS Foundation Trust      | 1583                  | 1431                          | 90%  | 360 (25%)                         | 441 (31%)          | 979 (68%)          | 884 (62%)                    | 578 (40%)                       | 469 (33%)                           | 1300 (91%)                         |
| Ashford and St Peter's Hospitals NHS Trust             | 144                   | 127                           | 88%  | 0                                 | 0                  | 62 (49%)           | 46 (36%)                     | 3 (2%)                          | 9 (7%)                              | 113 (89%)                          |
| Frimley Park Hospital NHS Foundation Trust             | 386                   | 362                           | 94%  | 132 (36%)                         | 133 (37%)          | 232 (64%)          | 215 (59%)                    | 141 (39%)                       | 209 (58%)                           | 333 (92%)                          |
| Hampshire Hospitals NHS Foundation Trust               | 369                   | 332                           | 90%  | 166 (50%)                         | 180 (54%)          | 281 (85%)          | 229 (69%)                    | 293 (88%)                       | 107 (32%)                           | 320 (96%)                          |
| Royal Surrey County Hospital NHS Trust                 | 366                   | 310                           | 85%  | 61 (20%)                          | 48 (15%)           | 177 (57%)          | 170 (55%)                    | 60 (19%)                        | 56 (18%)                            | 259 (84%)                          |
| Surrey and Sussex Healthcare NHS Trust                 | 318                   | 300                           | 94%  | 1 (0%)                            | 80 (27%)           | 227 (76%)          | 224 (75%)                    | 81 (27%)                        | 88 (29%)                            | 275 (92%)                          |
| Salford Royal Hospitals NHS Foundation Trust           | 502                   | 478                           | 95%  | 400 (84%)                         | 402 (84%)          | 454 (95%)          | 439 (92%)                    | 423 (88%)                       | 376 (79%)                           | 399 (83%)                          |
| Bolton Hospitals NHS Trust                             | 179                   | 173                           | 97%  | 130 (75%)                         | 133 (77%)          | 163 (94%)          | 165 (95%)                    | 147 (85%)                       | 92 (53%)                            | 170 (98%)                          |
| Salford Royal Hospitals NHS Foundation Trust           | 174                   | 158                           | 91%  | 127 (80%)                         | 135 (85%)          | 145 (92%)          | 142 (90%)                    | 134 (85%)                       | 143 (91%)                           | 83 (53%)                           |
| Wrightington, Wigan and Leigh NHS Trust                | 149                   | 147                           | 99%  | 143 (97%)                         | 134 (91%)          | 146 (99%)          | 132 (90%)                    | 142 (97%)                       | 141 (96%)                           | 146 (99%)                          |
| Sheffield Teaching Hospitals NHS Foundation Trust      | 1239                  | 1077                          | 87%  | 796 (74%)                         | 636 (59%)          | 790 (73%)          | 774 (72%)                    | 845 (78%)                       | 730 (68%)                           | 1043 (97%)                         |
| Barnsley Hospital NHS Foundation Trust                 | 128                   | 118                           | 92%  | 77 (65%)                          | 12 (10%)           | 112 (95%)          | 84 (71%)                     | 88 (75%)                        | 106 (90%)                           | 114 (97%)                          |
| Chesterfield Royal Hospital NHS Foundation Trust       | 291                   | 276                           | 95%  | 267 (97%)                         | 233 (84%)          | 274 (99%)          | 224 (81%)                    | 270 (98%)                       | 237 (86%)                           | 269 (97%)                          |
| Doncaster and Bassetlaw Hospitals NHS Foundation Trust | 298                   | 284                           | 95%  | 128 (45%)                         | 34 (12%)           | 133 (47%)          | 140 (49%)                    | 193 (68%)                       | 124 (44%)                           | 269 (95%)                          |
| Sheffield Teaching Hospitals NHS Foundation Trust      | 390                   | 274                           | 70%  | 199 (73%)                         | 232 (85%)          | 155 (57%)          | 223 (81%)                    | 169 (62%)                       | 144 (53%)                           | 271 (99%)                          |
| The Rotherham NHS Foundation Trust                     | 132                   | 125                           | 95%  | 125 (100%)                        | 125 (100%)         | 116 (93%)          | 103 (82%)                    | 125 (100%)                      | 119 (95%)                           | 120 (96%)                          |
| South Tees Hospitals NHS Foundation Trust              | 796                   | 773                           | 97%  | 647 (84%)                         | 127 (16%)          | 735 (95%)          | 671 (87%)                    | 470 (61%)                       | 393 (51%)                           | 767 (99%)                          |
| County Durham and Darlington NHS Foundation Trust      | 240                   | 233                           | 97%  | 232 (100%)                        | 124 (53%)          | 229 (98%)          | 210 (90%)                    | 217 (93%)                       | 232 (100%)                          | 232 (100%)                         |
| North Tees And Hartlepool NHS Foundation Trust         | 202                   | 199                           | 99%  | 197 (99%)                         | 1 (1%)             | 186 (93%)          | 165 (83%)                    | 150 (75%)                       | 149 (75%)                           | 196 (98%)                          |
| South Tees Hospitals NHS Trust                         | 354                   | 341                           | 96%  | 218 (64%)                         | 2 (1%)             | 320 (94%)          | 296 (87%)                    | 103 (30%)                       | 12 (4%)                             | 339 (99%)                          |
| Stockport NHS Foundation Trust                         | 630                   | 578                           | 92%  | 174 (30%)                         | 59 (10%)           | 429 (74%)          | 338 (58%)                    | 344 (60%)                       | 174 (30%)                           | 483 (84%)                          |
| East Cheshire NHS Trust                                | 65                    | 61                            | 94%  | 8 (13%)                           | 2 (3%)             | 53 (87%)           | 33 (54%)                     | 17 (28%)                        | 3 (5%)                              | 54 (89%)                           |

| Specialist MDT / Trust  | No. of expected cases | No. patients with NPCA record | Case ascertainment: No. of NPCA records /Expected cases | Performance status completed N(%) | ASA completed N(%) | PSA completed N(%) | Gleason Score Completed N(%) | TNM Completed <sup>2</sup> N(%) | ≥1 planned treatment recorded N (%) | ≥1 Cancer treatment modality N (%) |
|---|-----------------------|-------------------------------|---|-----------------------------------|--------------------|--------------------|------------------------------|---------------------------------|-------------------------------------|------------------------------------|
| Mid Cheshire Hospitals NHS Trust                                      | 241                   | 218                           | 90%   | 97 (44%)                          | 13 (6%)            | 198 (91%)          | 174 (80%)                    | 159 (73%)                       | 103 (47%)                           | 188 (86%)                          |
| Stockport NHS Foundation Trust  | 267                   | 244                           | 91%   | 65 (27%)                          | 44 (18%)           | 143 (59%)          | 93 (38%)                     | 158 (65%)                       | 44 (18%)                            | 190 (78%)                          |
| Tameside and Glossop Integrated Care NHS Foundation Trust             | 57                    | 55                            | 96%   | 4 (7%)                            | 0                  | 35 (64%)           | 38 (69%)                     | 10 (18%)                        | 24 (44%)                            | 51 (93%)                           |
| The Christie NHS Foundation Trust                                     | 102                   | 68                            | 67%   | 43 (63%)                          | 38 (56%)           | 44 (65%)           | 41 (60%)                     | 41 (60%)                        | 43 (63%)                            | 36 (53%)                           |
| The Christie Hospital NHS Trust                                       | 102                   | 68                            | 67%   | 43 (63%)                          | 38 (56%)           | 44 (65%)           | 41 (60%)                     | 41 (60%)                        | 43 (63%)                            | 36 (53%)                           |
| The Mid Yorkshire Hospitals NHS Trust                                 | 347                   | 282                           | 81%   | 267 (95%)                         | 266 (94%)          | 266 (94%)          | 250 (89%)                    | 267 (95%)                       | 269 (95%)                           | 265 (94%)                          |
| The Mid Yorkshire Hospitals NHS Trust                                 | 347                   | 282                           | 81%   | 267 (95%)                         | 266 (94%)          | 266 (94%)          | 250 (89%)                    | 267 (95%)                       | 269 (95%)                           | 265 (94%)                          |
| The Royal Bournemouth and Christchurch Hospitals NHS Foundation Trust | 780                   | 744                           | 95%   | 319 (43%)                         | 12 (2%)            | 610 (82%)          | 531 (71%)                    | 387 (52%)                       | 333 (45%)                           | 707 (95%)                          |
| Dorset County Hospitals NHS Foundation Trust                          | 258                   | 247                           | 96%   | 211 (85%)                         | 9 (4%)             | 218 (88%)          | 170 (69%)                    | 131 (53%)                       | 199 (81%)                           | 243 (98%)                          |
| The Royal Bournemouth and Christchurch Hospitals NHS Foundation Trust | 522                   | 497                           | 95%   | 108 (22%)                         | 3 (1%)             | 392 (79%)          | 361 (73%)                    | 256 (52%)                       | 134 (27%)                           | 464 (93%)                          |
| The Royal Liverpool & Broadgreen University Hospitals NHS Trust       | 794                   | 740                           | 93%   | 454 (61%)                         | 516 (70%)          | 715 (97%)          | 582 (79%)                    | 609 (82%)                       | 496 (67%)                           | 708 (96%)                          |
| Aintree University Hospital NHS Foundation Trust                      | 200                   | 192                           | 96%   | 187 (97%)                         | 183 (95%)          | 189 (98%)          | 131 (68%)                    | 178 (93%)                       | 170 (89%)                           | 189 (98%)                          |
| Royal Liverpool and Broadgreen University Hospitals NHS Trust         | 192                   | 174                           | 91%   | 157 (90%)                         | 148 (85%)          | 167 (96%)          | 153 (88%)                    | 167 (96%)                       | 124 (71%)                           | 173 (99%)                          |
| Southport and Ormskirk Hospital NHS Trust                             | 240                   | 223                           | 93%   | 100 (45%)                         | 134 (60%)          | 220 (99%)          | 181 (81%)                    | 166 (74%)                       | 125 (56%)                           | 208 (93%)                          |
| St Helens and Knowsley Hospitals NHS Trust                            | 162                   | 151                           | 93%   | 10 (7%)                           | 51 (34%)           | 139 (92%)          | 117 (77%)                    | 98 (65%)                        | 77 (51%)                            | 138 (91%)                          |
| The Royal Marsden NHS Foundation Trust                                | 1176                  | 910                           | 77%   | 292 (32%)                         | 193 (21%)          | 587 (65%)          | 410 (45%)                    | 711 (78%)                       | 541 (59%)                           | 847 (93%)                          |
| Croydon Health Services NHS Trust                                     | 110                   | 100                           | 91%   | 16 (16%)                          | 10 (10%)           | 75 (75%)           | 21 (21%)                     | 81 (81%)                        | 91 (91%)                            | 98 (98%)                           |
| Epsom And St Helier University Hospitals NHS Trust                    | 267                   | 223                           | 84%   | 49 (22%)                          | 63 (28%)           | 142 (64%)          | 169 (76%)                    | 146 (65%)                       | 148 (66%)                           | 213 (96%)                          |
| Kingston Hospital NHS Trust   | 162                   | 132                           | 81%   | 55 (42%)                          | 46 (35%)           | 123 (93%)          | 63 (48%)                     | 113 (86%)                       | 60 (45%)                            | 125 (95%)                          |
| St George's Healthcare NHS Trust                                      | 460                   | 374                           | 81%   | 144 (39%)                         | 54 (14%)           | 177 (47%)          | 89 (24%)                     | 309 (83%)                       | 180 (48%)                           | 336 (90%)                          |
| The Royal Marsden NHS Foundation Trust                                | 177                   | 81                            | 46%   | 28 (35%)                          | 20 (25%)           | 70 (86%)           | 68 (84%)                     | 62 (77%)                        | 62 (77%)                            | 75 (93%)                           |
| University College London Hospitals NHS Foundation Trust              | 799                   | 635                           | 79%   | 68 (11%)                          | 49 (8%)            | 229 (36%)          | 217 (34%)                    | 265 (42%)                       | 222 (35%)                           | 577 (91%)                          |
| Royal Free Hampstead NHS Trust  | 424                   | 383                           | 90%   | 15 (4%)                           | 15 (4%)            | 119 (31%)          | 53 (14%)                     | 120 (31%)                       | 69 (18%)                            | 355 (93%)                          |
| The Whittington Hospital NHS Trust                                    | 84                    | 61                            | 73%   | 42 (69%)                          | 24 (39%)           | 54 (89%)           | 48 (79%)                     | 54 (89%)                        | 56 (92%)                            | 41 (67%)                           |
| University College London Hospitals NHS Foundation Trust              | 291                   | 191                           | 66%   | 11 (6%)                           | 10 (5%)            | 56 (29%)           | 116 (61%)                    | 91 (48%)                        | 97 (51%)                            | 181 (95%)                          |
| University Hospital Southampton NHS Foundation Trust                  | 605                   | 517                           | 85%   | 282 (55%)                         | 218 (42%)          | 355 (69%)          | 393 (76%)                    | 313 (61%)                       | 354 (68%)                           | 494 (96%)                          |
| Poole Hospital NHS Foundation Trust                                   | 34                    | 27                            | 79%   | 4 (15%)                           | 0                  | 14 (52%)           | 14 (52%)                     | 11 (41%)                        | 10 (37%)                            | 27 (100%)                          |
| Salisbury NHS Foundation Trust  | 235                   | 214                           | 91%   | 174 (81%)                         | 173 (81%)          | 176 (82%)          | 199 (93%)                    | 144 (67%)                       | 180 (84%)                           | 205 (96%)                          |
| University Hospital Southampton NHS Trust                             | 336                   | 276                           | 82%   | 104 (38%)                         | 45 (16%)           | 165 (60%)          | 180 (65%)                    | 158 (57%)                       | 164 (59%)                           | 262 (95%)                          |
| University Hospitals of North Midlands NHS Trust                      | 1276                  | 1232                          | 97%   | 65 (5%)                           | 148 (12%)          | 404 (33%)          | 804 (65%)                    | 328 (27%)                       | 382 (31%)                           | 1215 (99%)                         |
| The Dudley Group NHS Hospitals Foundation Trust                       | 290                   | 272                           | 94%   | 59 (22%)                          | 90 (33%)           | 106 (39%)          | 105 (39%)                    | 94 (35%)                        | 92 (34%)                            | 268 (99%)                          |
| The Royal Wolverhampton Hospitals NHS Trust                           | 264                   | 259                           | 98%   | 5 (2%)                            | 55 (21%)           | 234 (90%)          | 202 (78%)                    | 191 (74%)                       | 156 (60%)                           | 258 (100%)                         |

| Specialist MDT / Trust  | No. of expected cases | No. patients with NPCA record | Case ascertainment: No. of NPCA records / Expected cases | Performance status completed N(%) | ASA completed N(%) | PSA completed N(%) | Gleason Score Completed N(%) | TNM Completed <sup>2</sup> N(%) | ≥1 planned treatment recorded N (%) | ≥1 Cancer treatment modality N (%) |
|---|-----------------------|-------------------------------|--|-----------------------------------|--------------------|--------------------|------------------------------|---------------------------------|-------------------------------------|------------------------------------|
| The Shrewsbury and Telford Hospital NHS Trust   | 265                   | 253                           | 95%  | 0                                 | 1 (0%)             | 2 (1%)             | 162 (64%)                    | 6 (2%)                          | 68 (27%)                            | 252 (100%)                         |
| University Hospital of North Midlands NHS Trust   | 457                   | 448                           | 98%  | 1 (0%)                            | 2 (0%)             | 62 (14%)           | 335 (75%)                    | 37 (8%)                         | 66 (15%)                            | 437 (98%)                          |
| University Hospital of South Manchester NHS Foundation Trust                                  | 194                   | 183                           | 94%  | 128 (70%)                         | 132 (72%)          | 173 (95%)          | 159 (87%)                    | 146 (80%)                       | 146 (80%)                           | 178 (97%)                          |
| University Hospital of South Manchester NHS Foundation Trust                                  | 194                   | 183                           | 94%  | 128 (70%)                         | 132 (72%)          | 173 (95%)          | 159 (87%)                    | 146 (80%)                       | 146 (80%)                           | 178 (97%)                          |
| University Hospitals Birmingham NHS Foundation Trust  | 624                   | 558                           | 89%  | 89 (16%)                          | 34 (6%)            | 508 (91%)          | 486 (87%)                    | 280 (50%)                       | 311 (56%)                           | 541 (97%)                          |
| Sandwell and West Birmingham Hospitals NHS Trust  | 290                   | 284                           | 98%  | 3 (1%)                            | 18 (6%)            | 280 (99%)          | 263 (93%)                    | 78 (27%)                        | 212 (75%)                           | 281 (99%)                          |
| University Hospital Birmingham NHS Foundation Trust   | 334                   | 274                           | 82%  | 86 (31%)                          | 16 (6%)            | 228 (83%)          | 223 (81%)                    | 202 (74%)                       | 99 (36%)                            | 260 (95%)                          |
| University Hospitals Coventry and Warwickshire NHS Trust                                      | 1021                  | 893                           | 87%  | 554 (62%)                         | 598 (67%)          | 840 (94%)          | 777 (87%)                    | 604 (68%)                       | 817 (91%)                           | 740 (83%)                          |
| George Eliot Hospital NHS Trust   | 116                   | 109                           | 94%  | 8 (7%)                            | 12 (11%)           | 105 (96%)          | 103 (94%)                    | 15 (14%)                        | 83 (76%)                            | 48 (44%)                           |
| South Warwickshire General Hospitals NHS Trust  | 141                   | 122                           | 87%  | 9 (7%)                            | 14 (11%)           | 98 (80%)           | 103 (84%)                    | 43 (35%)                        | 107 (88%)                           | 67 (55%)                           |
| University Hospitals Coventry and Warwickshire NHS Trust                                      | 271                   | 183                           | 68%  | 86 (47%)                          | 96 (52%)           | 162 (89%)          | 155 (85%)                    | 72 (39%)                        | 151 (83%)                           | 153 (84%)                          |
| Worcestershire Acute Hospitals NHS Trust  | 493                   | 479                           | 97%  | 451 (94%)                         | 476 (99%)          | 475 (99%)          | 416 (87%)                    | 474 (99%)                       | 476 (99%)                           | 472 (99%)                          |
| University Hospitals of Leicester NHS Trust   | 1007                  | 784                           | 78%  | 66 (8%)                           | 21 (3%)            | 222 (28%)          | 176 (22%)                    | 179 (23%)                       | 29 (4%)                             | 738 (94%)                          |
| United Lincolnshire Hospitals NHS Trust   | 559                   | 421                           | 75%  | 20 (5%)                           | 17 (4%)            | 40 (10%)           | 32 (8%)                      | 80 (19%)                        | 21 (5%)                             | 400 (95%)                          |
| University Hospitals of Leicester NHS Trust   | 448                   | 363                           | 81%  | 46 (13%)                          | 4 (1%)             | 182 (50%)          | 144 (40%)                    | 99 (27%)                        | 8 (2%)                              | 338 (93%)                          |
| Wirral University Teaching Hospitals NHS Foundation Trust                                     | 657                   | 612                           | 93%  | 542 (89%)                         | 500 (82%)          | 588 (96%)          | 520 (85%)                    | 526 (86%)                       | 537 (88%)                           | 573 (94%)                          |
| Clatterbridge Cancer Centre NHS Foundation Trust  | 32                    | 26                            | 81%  | 13 (50%)                          | 11 (42%)           | 23 (88%)           | 18 (69%)                     | 25 (96%)                        | 15 (58%)                            | 26 (100%)                          |
| Countess of Chester Hospital NHS Foundation Trust   | 196                   | 188                           | 96%  | 181 (96%)                         | 164 (87%)          | 186 (99%)          | 169 (90%)                    | 142 (76%)                       | 161 (86%)                           | 179 (95%)                          |
| Warrington and Halton Hospitals NHS Foundation Trust (WAS North Cheshire Hospitals NHS Trust) | 170                   | 154                           | 91%  | 144 (94%)                         | 144 (94%)          | 150 (97%)          | 128 (83%)                    | 139 (90%)                       | 147 (95%)                           | 142 (92%)                          |
| Wirral University Teaching Hospital NHS Foundation Trust                                      | 259                   | 244                           | 94%  | 204 (84%)                         | 181 (74%)          | 229 (94%)          | 205 (84%)                    | 220 (90%)                       | 214 (88%)                           | 226 (93%)                          |

<sup>1</sup> NHS Trusts referring patients to more than one sMDT include Queen Elizabeth Hospital King's Lynn NHS Trust and Ipswich Hospital NHS Trust (also refer patients to Norfolk & Norwich University Hospital NHS Trust sMDT), County Durham and Darlington NHS Foundation Trust (South Tees Hospitals NHS Foundation Trust sMDT), Worcestershire Acute Hospitals NHS Trust (University Hospitals Coventry and Warwickshire NHS Trust sMDT), York Hospitals NHS Trust (Leeds Teaching Hospitals NHS Trust sMDT) and Hampshire Hospitals Foundation Trust (University Hospital Southampton NHS Trust sMDT). Where this occurs due to different hospitals within the same Trust accessing different sMDTs, individual hospital data were included in the relevant sMDT, otherwise data were included in the specialist MDT most frequently accessed by the Trust.

<sup>2</sup> % of total for whom all three T, N and M are non-missing (X allowed)

† NPCA Data from South Tyneside NHS Foundation Trust is submitted by City Hospitals Sunderland NHS Foundation Trust

†† Includes NPCA data submissions from West Middlesex NHS Trust, which merged with Chelsea and Westminster Healthcare NHS Trust in 2015.